

Anti-theft plates for doors

The plates and the pedal lock are used for **Fiat Ducato, Citroën Jumper and Peugeot Boxer**, for models **from 2006 to today** and prevent both the opening of the locks, which is very easy for "crooks" in these vans or motorhomes, prevent their entry by this means, as well as the circulation of the vehicle.

What they do is make a hole with a punch, and then pry the closing cam, which is the same as if they had the key. I'll post some pictures so you can see how simple it is. It doesn't take more than a few seconds.

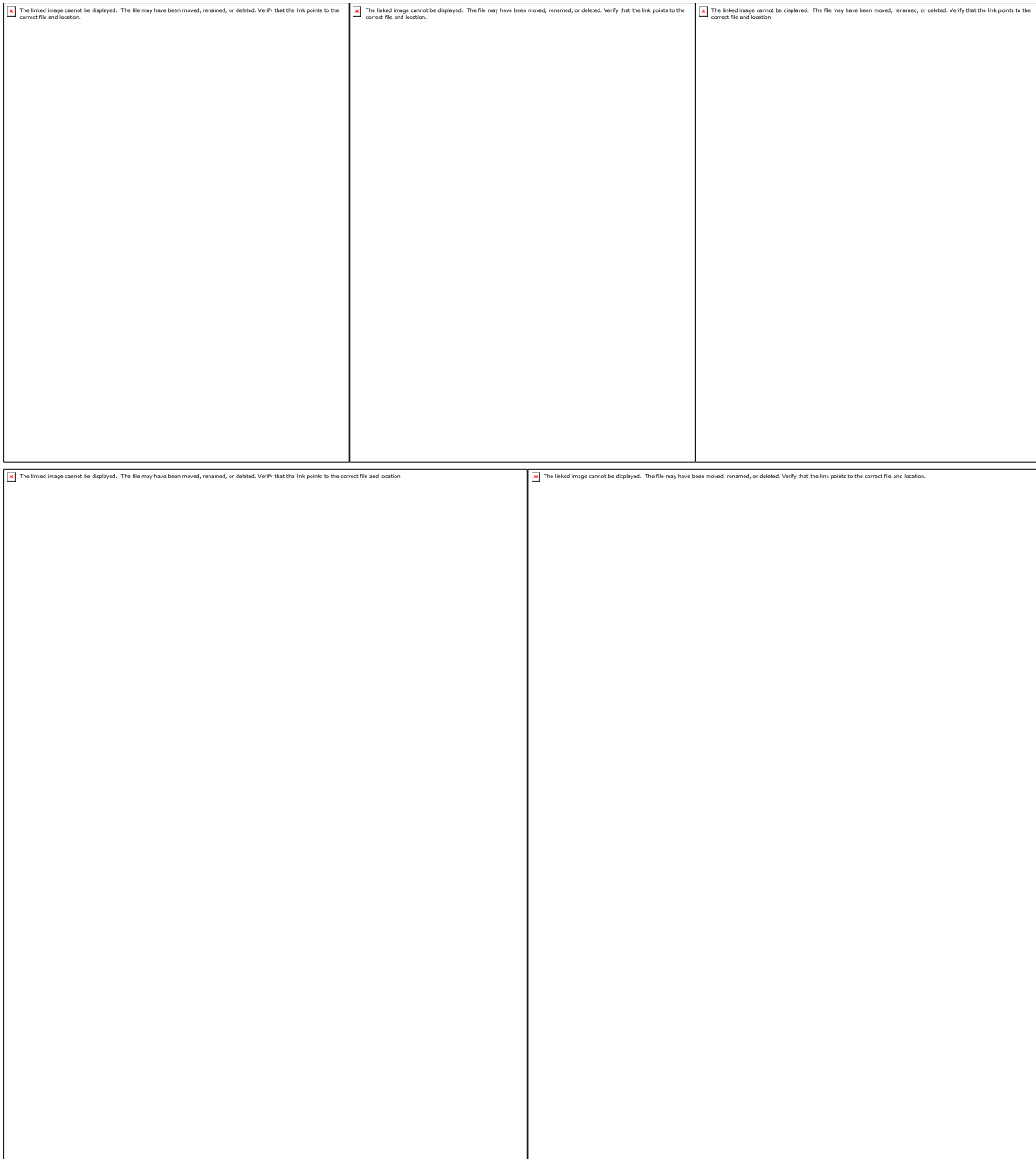
The plates are placed in a simple way, which we explain here step by step, and they have an adhesive to place on the door and deter, or at least attempt to do so, those potentially interested in this method of theft.

Driver's door:



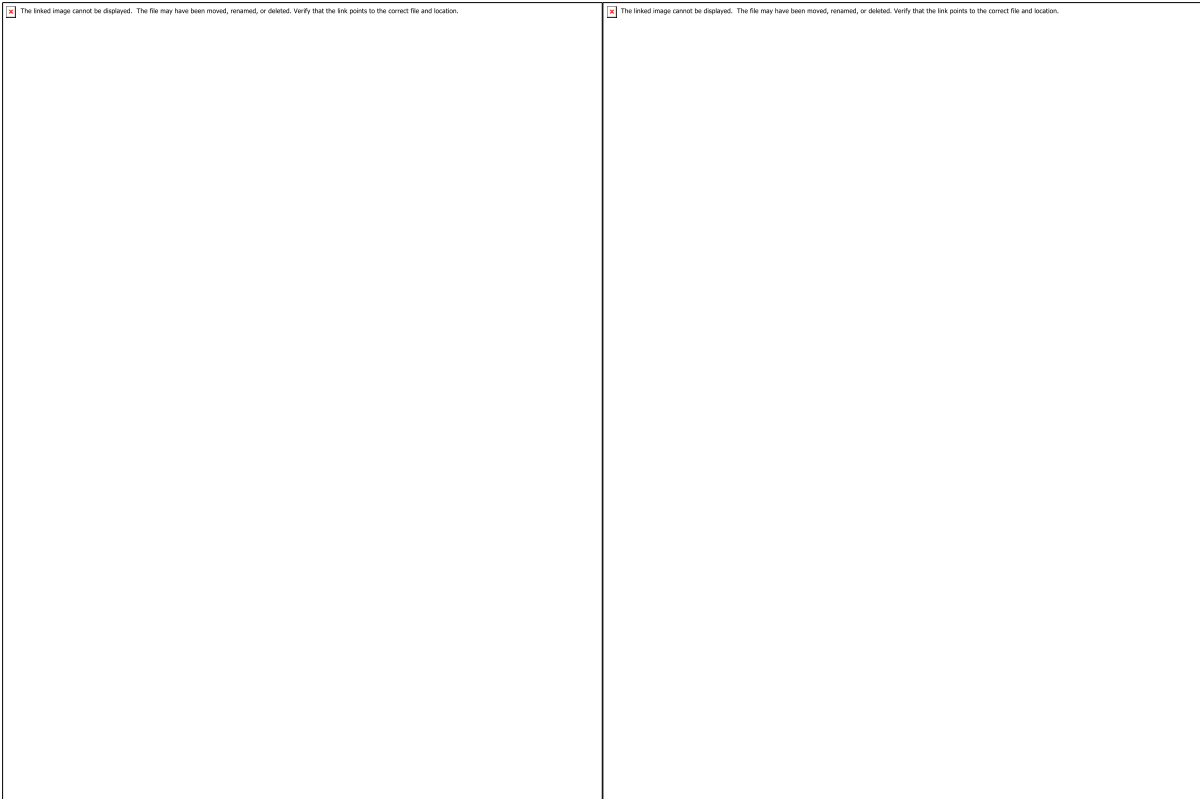
The first step is to remove the driver's door panels and/or the rear door, which are the easiest to handle. The rear one is very simple, just remove a few plastic clips and the interior handle, but the front one is a little more complicated so we explain it step by step.

First we remove the plastic, the one that goes on the door handle, the speaker trim, the mirror and window controls and finally the one that goes in the corner, which if you have Remis blinds, is a bit more complicated, but it can be done. do without dismantling them.

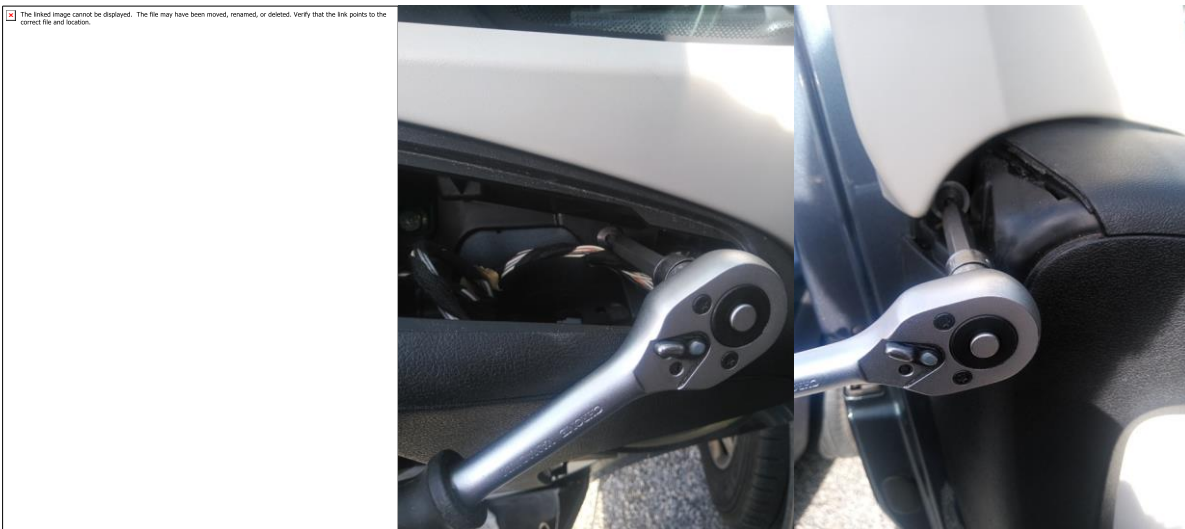


You must disconnect the two connectors from the window regulator controls, indicated by the red arrows.

Next, you need to disconnect the speaker, also marked with a red arrow, and proceed to unscrew it (green arrows). It has three Phillips screws and two more at the bottom of the handle, also marked in green.



You must now remove all the Torx T30 head screws, which are the ones that actually hold the assembly to the structure. Be careful because where the shooter goes there are two.



Now we lift the panel by lever and collect the plastic staples that usually remain on the sheet, to put them back in their place later.

And it's almost there. We see the inside of the closure. We remove the rubber marked in red to be able to insert the key (10 mm socket), and we remove the two nuts marked in green.

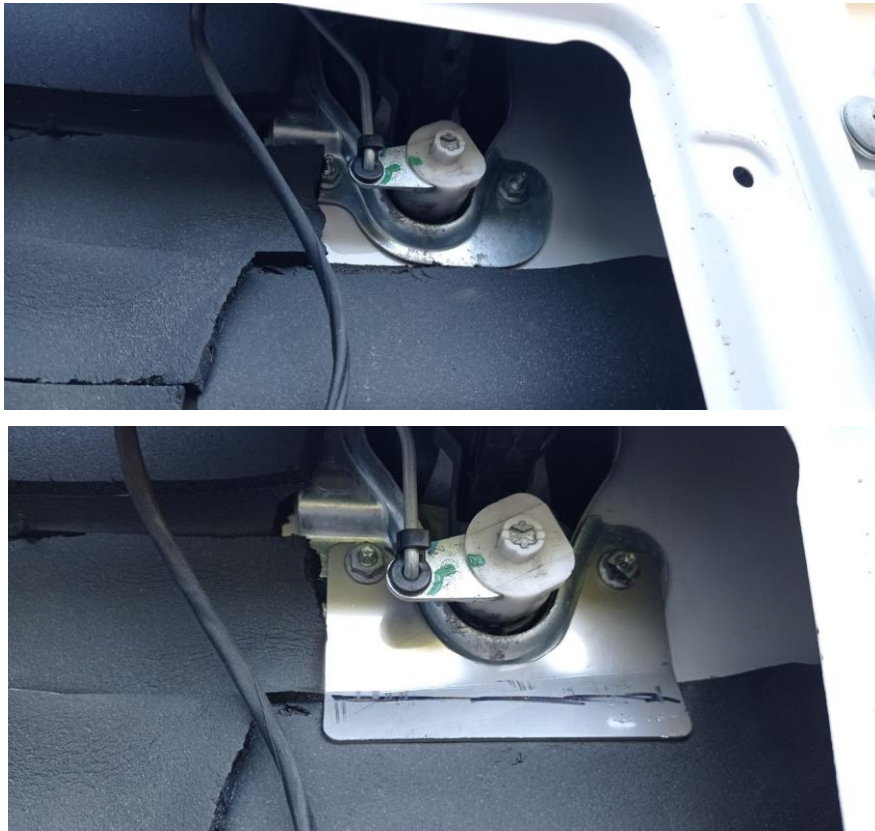


Then we put the plate back in its place with the same nuts and start the whole assembly process again in the opposite direction.



Rear door (Passenger compartment in motorhomes)

This door is simpler. You just have to remove the panel by stretching and we can access the lock. I give you a photo without protection and another with protection.



And just place the sticker. If we scare them when we see it, so much the better. And if, despite the fact that they see it, they try to use the punch, they will see that it is impossible to pierce a stainless steel sheet 2 mm thick...



If you have any questions, please feel free to email slowworks.vans@gmail.com