

Performance-Based Standards (PBS) Vehicle Approval

Heavy Vehicle National Law Section 23

Heavy Vehicle (General) National Regulation Section 17

This is not an authorisation to access the road network.

You must comply with the relevant Notice or if required, obtain an access permit.

23 December 2019

Ref No: PBS – V170215 – VA7204 – Hercules Engineering / Hawgood Haulage – v1A

This PBS Vehicle Approval modifies any previously issued approval for the vehicle(s) listed herein operating under Application Number V170215.

The vehicle(s) listed herein qualify for general access under the specified PBS vehicle provision of the HVNL. See 'General access for a specified PBS vehicle' section of this document.

Applicant details	Malcolm Hall Hercules Engineering 19 Clinker St Darra QLD 4076	Operator	Hawgood Haulage 1 Forrest St Nudgee QLD 4014
-------------------	---	----------	--

Application Number	V170215	Vehicle	3-axle truck 4-axle dog
Load	Quarry and Bulk	Length (mm)	≤ 19450
Assessor	Rob Di Cristoforo	Height (mm)	≤ 4300

Mass Limits	Level 1	Level 2
GML (t)	50.5	55.85
CML (t)	NA	57.35
HML (t)	NA	57.35
Bridge Assessment	Tier 1	

477SQM + YQ03AP

Axle Group Masses	Level 1	Level 2	
	GML	GML	CML HML
Steer (t)	6.5	6.5	6.5
Drive (t)	16.5	16.5	17.0
Trailer Front (t)	13.75	16.5*	17.0*
Trailer Rear (t)	13.75	16.5*	17.0*
* The trailer mass is limited to - - 32.85t at Level 2 GML - 33.85t at Level 2 CML/HML			

Operating conditions

The NHVR approves the vehicles listed herein for the level(s) shown in the “Mass Limits” table with the following operating conditions:

1. The total combination mass must not exceed the limits in the “Mass Limits” table.
2. The axle group masses must not exceed the limits in the “Axle Group Masses” table.
3. If the “Mass Limits” table specifies Tier 2 or Tier 3, a bridge assessment is required.
4. Maximum bin heights measured from the ground must not exceed: (m)
 - Truck: 2.845
 - Trailer: 2.870
5. Maximum payload heights measured from the ground must not exceed: (m)
 - Truck: 3.230
 - Trailer: 3.290
6. 6.5 tonne complying steer axle requirements:
 - an engine that complies with the engine emission standards of Australian Design Rule (ADR) 80/01 (Euro 4) or a later version of ADR 80; and
 - a front underrun protection device (FUPD) that complies with UN ECE Regulation 93 or ADR 84; and
 - a cabin that complies with UN ECE Regulation 29.
7. Concessional Mass Limits (CML) requirements:
 - a National Heavy Vehicle Accreditation Scheme (NHVAS) – Mass Management Accreditation must be in force for all motor vehicles listed on this vehicle approval.
8. Higher Mass Limits (HML) requirements:
 - for tandem axles groups, road friendly suspensions.
9. When the trailer mass exceeds the truck mass, at least 16t on the drive axle group is required. This clause does not apply for an unladen vehicle.

Exemptions

Heavy Vehicle National Law Section 24

Heavy Vehicle (General) National Regulation Section 28

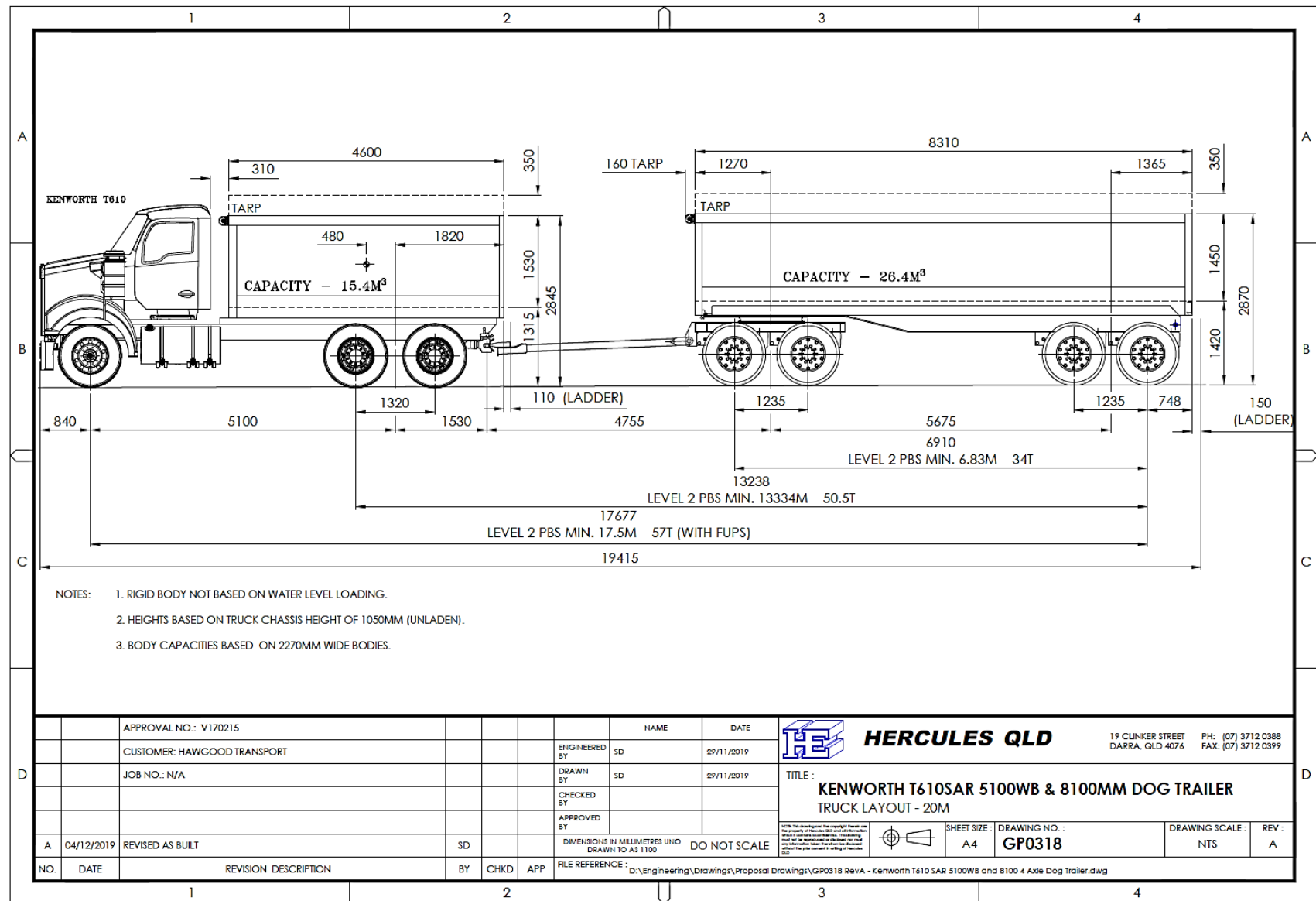
The following table lists exemptions from prescribed vehicle standards that have been granted for the vehicle(s) in this vehicle approval.

Exemptions	
ADR	NA
HV(MDL)NR	Schedule 6, Section 3 (Length – General)
HV(VS)NR	NA

ADR Australian Design Rules

HV(MDL)NR *Heavy Vehicle (Mass, Dimension and Loading) National Regulation*

HV(VS)NR *Heavy Vehicle (Vehicle Standards) National Regulation*



Details of truck(s) or prime mover(s)

Make	Kenworth
Model	T610SAR
VIN(s)	6F5000000KA464488
Engine make/ model/ rating	Cummins X15 550Hp ADR 80/03
Transmission make/ model	Eaton Fuller RTLO20918B
Differential make/ model/ FD ratio	Meritor RT46-160GP 4.30
Suspension make/ model (Steer)	Kenworth Leaf Spring 7.2t
Suspension make/ model (Drive)	Kenworth Airglide 460 RF2012
Tyres make/ size/ model (Steer)	295/80R22.5 Bridgestone R150 II
Tyres make/ size/ model (Drive)	11R22.5 Bridgestone M822
Brakes (Load Proportioning, ABS, ECB, etc.)	ABS
Tow coupling make/ D rating	Ringfeder 303AUS D=320kN
Wheelbase (mm)	5100
Vehicle height (Measured from the ground) (mm)	2845
Number of axles	3
ADR category	NC
GVM (kg)	26,500
GCM (kg)	97,000
Comments/ notes:	

Details of trailer(s) or dolly(s)

Type	4 Axle Dog Trailer
Make	Maxitrans
Model	HXW D4
VIN(s)	6F80000000B086242
Suspension make/ model	SAF Intradisc IO Series
Tyres make/ size/ model	11R22.5 Goodyear Marathon LHT2 11R22.5 Michelin X Multi T 11R22.5 Firestone T559 11R22.5 Bridgestone RIB 187
Drawbar length (mm)	4755
Coupling make/ D rating	Ballrace
Brakes (Load Proportioning, ABS, ECB, etc.)	ABS
Wheelbase (mm)	5675
Vehicle height (Measured from the ground) (mm)	2870
Number of axles	4
ADR category	TD
ATM (kg)	34,000
Comments/ notes:	

Approved tyre options –

Short Drawbar variant using any drive suspension

Steer –

- non-brand specific 22.5-inch rim diameter

Drive and Trailer –

DRIVE TYRES	TRAILING UNIT TYRES																							
	Advance GL274A 11R22.5	Aeolus ASR30 275/70R22.5	Aeolus HN06 11R22.5	Aeolus HN08 11R22.5	Aeolus HN266 11R22.5	Austyre ST01 11R22.5	BFGoodrich Route Control S 11R22.5	BFGoodrich ST270 11R22.5	Boto BT168 11R22.5	Boto BT370 11R22.5	Bridgestone 11R22.5	Bridgestone 275/70R22.5	Bridgestone R168 11R22.5	Chao Yang CR906 275/70R22.5	Chao Yang CR926D 11R22.5	Chao Yang CR960A 11R22.5	Chao Yang CR976A 275/70R22.5	Continental HSC1 11R22.5	Continental HSR1 275/70R22.5	Continental HT3 11R22.5	Continental HTR 11R22.5	Dunlop 11R22.5	Dunlop 275/70R22.5	Falken GI377 11R22.5
Advance GL274A 11R22.5																								
Aeolus ADC53 11R22.5																								
Aeolus HN08 11R22.5																								
Aeolus HN266 11R22.5																								
Austyre Raptor 11R22.5																								
Boto BT168 11R22.5																								
Bridgestone 11R22.5																								
Bridgestone 295/80R22.5																								
Chao Yang CM333 11R22.5																								
Continental HD HYBRID 295/80R22.5																								
Continental HDC1 295/80R22.5																								
Continental HDR2+ 11R22.5																								
Continental HSC1 11R22.5																								
Continental HSC1 295/80R22.5																								
Dunlop 11R22.5																								
Dunlop 295/80R22.5																								
Falken RI128 11R22.5																								
GT Radial GSR225 295/80R22.5																								
GT Radial GT276 11R22.5																								
General Tire RA 11R22.5																								
Giti GSR225 295/80R22.5																								
Giti GT276 11R22.5																								
Golden Crown AZ126 11R22.5																								
Goodride CM958 295/80R22.5																								
Goodride CM983 11R22.5																								
Goodride MD738 11R22.5																								
Goodyear 11R22.5																								

A cell that is denoted by a ‘•’ indicates a permissible combination of drive and trailing unit tyres. Cells that are blank are not permitted.

Retread tyres are permitted on the steer axle.

Retread or regroove tyres are permitted on drive and trailer axles, provided they are certified by the manufacturer that its performance is equivalent to a new tyre.

Tyre load ratings must be appropriate for the axle mass.

Tyres listed herein are specific for PBS application number V170215.

A different list of tyres will apply for other combination types and different PBS application numbers.

Approved tyre options –

Short Drawbar variant using any drive suspension

Steer –

- non-brand specific 22.5-inch rim diameter

Drive and Trailer –

[illegible]

A cell that is denoted by a '•' indicates a permissible combination of drive and trailing unit tyres. Cells that are blank are not permitted.

Retread tyres are permitted on the steer axle.

Retread or regroove tyres are permitted on drive and trailer axles, provided they are certified by the manufacturer that its performance is equivalent to a new tyre.

Tyre load ratings must be appropriate for the axle mass.

Tyres listed herein are specific for PBS application number V170215.

A different list of tyres will apply for other combination types and different PBS application numbers.

Approved tyre options –

Short Drawbar variant using any drive suspension

Steer –

- non-brand specific 22.5-inch rim diameter

Drive and Trailer –

DRIVE TYRES	TRAILING UNIT TYRES																							
	Advance GL274A 11R22.5	Aeolus ASR30 275/70R22.5	Aeolus HN06 11R22.5	Aeolus HN08 11R22.5	Aeolus HN266 11R22.5	Austyre ST01 11R22.5	BFGoodrich Route Control S 11R22.5	BFGoodrich ST270 11R22.5	Boto BT168 11R22.5	Boto BT370 11R22.5	Bridgestone 11R22.5	Bridgestone 275/70R22.5	Bridgestone R168 11R22.5	Chao Yang CR906 275/70R22.5	Chao Yang CR926D 11R22.5	Chao Yang CR960A 11R22.5	Chao Yang CR976A 275/70R22.5	Continental HSC1 11R22.5	Continental HSR1 275/70R22.5	Continental HT3 11R22.5	Continental HTR 11R22.5	Dunlop 11R22.5	Dunlop 275/70R22.5	Falken G1377 11R22.5
Goodyear 295/80R22.5	•	•	•	•	•	•	•	•	•	•	•	•	•	•	•	•	•	•	•	•	•	•	•	•
Hankook AH11 295/80R22.5	•	•	•	•	•	•	•	•	•	•	•	•	•	•	•	•	•	•	•	•	•	•	•	•
Hankook AH22 11R22.5	•	•	•	•	•	•	•	•	•	•	•	•	•	•	•	•	•	•	•	•	•	•	•	•
Hankook AH22+ 295/80R22.5	•	•	•	•	•	•	•	•	•	•	•	•	•	•	•	•	•	•	•	•	•	•	•	•
Hankook AH22R 295/80R22.5	•	•	•	•	•	•	•	•	•	•	•	•	•	•	•	•	•	•	•	•	•	•	•	•
Hankook AH33 295/80R22.5	•	•	•	•	•	•	•	•	•	•	•	•	•	•	•	•	•	•	•	•	•	•	•	•
Hankook AL10 295/80R22.5	•	•	•	•	•	•	•	•	•	•	•	•	•	•	•	•	•	•	•	•	•	•	•	•
Hankook AM06 11R22.5	•	•	•	•	•	•	•	•	•	•	•	•	•	•	•	•	•	•	•	•	•	•	•	•
Hankook DH03 295/80R22.5	•	•	•	•	•	•	•	•	•	•	•	•	•	•	•	•	•	•	•	•	•	•	•	•
Hankook DH06 11R22.5	•	•	•	•	•	•	•	•	•	•	•	•	•	•	•	•	•	•	•	•	•	•	•	•
Hankook DH16 11R22.5	•	•	•	•	•	•	•	•	•	•	•	•	•	•	•	•	•	•	•	•	•	•	•	•
Hankook DL10 295/80R22.5	•	•	•	•	•	•	•	•	•	•	•	•	•	•	•	•	•	•	•	•	•	•	•	•
Hankook DM03 11R22.5	•	•	•	•	•	•	•	•	•	•	•	•	•	•	•	•	•	•	•	•	•	•	•	•
Hankook DM09 11R22.5	•	•	•	•	•	•	•	•	•	•	•	•	•	•	•	•	•	•	•	•	•	•	•	•
Hankook Z35A 11R22.5	•	•	•	•	•	•	•	•	•	•	•	•	•	•	•	•	•	•	•	•	•	•	•	•
Haulmax ATT101 11R22.5	•	•	•	•	•	•	•	•	•	•	•	•	•	•	•	•	•	•	•	•	•	•	•	•
Haulmax ATT202 11R22.5	•	•	•	•	•	•	•	•	•	•	•	•	•	•	•	•	•	•	•	•	•	•	•	•
Haulmax ATT307 11R22.5	•	•	•	•	•	•	•	•	•	•	•	•	•	•	•	•	•	•	•	•	•	•	•	•
Hilo 660 11R22.5	•	•	•	•	•	•	•	•	•	•	•	•	•	•	•	•	•	•	•	•	•	•	•	•
Jinyu JY601 11R22.5	•	•	•	•	•	•	•	•	•	•	•	•	•	•	•	•	•	•	•	•	•	•	•	•
Kumho KR001 11R22.5	•	•	•	•	•	•	•	•	•	•	•	•	•	•	•	•	•	•	•	•	•	•	•	•
Loadrunner LR835D 11R22.5	•	•	•	•	•	•	•	•	•	•	•	•	•	•	•	•	•	•	•	•	•	•	•	•
Michelin 11R22.5	•	•	•	•	•	•	•	•	•	•	•	•	•	•	•	•	•	•	•	•	•	•	•	•
Michelin 295/80R22.5	•	•	•	•	•	•	•	•	•	•	•	•	•	•	•	•	•	•	•	•	•	•	•	•
O'Green AG677 11R22.5	•	•	•	•	•	•	•	•	•	•	•	•	•	•	•	•	•	•	•	•	•	•	•	•
Triangle TR666 11R22.5	•	•	•	•	•	•	•	•	•	•	•	•	•	•	•	•	•	•	•	•	•	•	•	•
Triangle TR668 11R22.5	•	•	•	•	•	•	•	•	•	•	•	•	•	•	•	•	•	•	•	•	•	•	•	•
Triangle TR688 11R22.5	•	•	•	•	•	•	•	•	•	•	•	•	•	•	•	•	•	•	•	•	•	•	•	•
Triangle TR501 11R22.5	•	•	•	•	•	•	•	•	•	•	•	•	•	•	•	•	•	•	•	•	•	•	•	•
Yokohama TY517 11R22.5	•	•	•	•	•	•	•	•	•	•	•	•	•	•	•	•	•	•	•	•	•	•	•	•

A cell that is denoted by a '•' indicates a permissible combination of drive and trailing unit tyres. Cells that are blank are not permitted.

Retread tyres are permitted on the steer axle.

Retread or regroove tyres are permitted on drive and trailer axles, provided they are certified by the manufacturer that its performance is equivalent to a new tyre.

Tyre load ratings must be appropriate for the axle mass.

Tyres listed herein are specific for PBS application number V170215.

A different list of tyres will apply for other combination types and different PBS application numbers.

Approved tyre options –

Short Drawbar variant using any drive suspension

Steer –

- non-brand specific 22.5-inch rim diameter

Drive and Trailer –

DRIVE TYRES	TRAILING UNIT TYRES																							
		•	•	•	•	•	•	•	•	•	•	•	•	•	•	•	•	•	•	•	•	•	•	•
Goodyear 295/80R22.5		•																						
Hankook AH11 295/80R22.5		•																						
Hankook AH22 11R22.5																								
Hankook AH22+ 295/80R22.5		•																						
Hankook AH22R 295/80R22.5																								
Hankook AH33 295/80R22.5		•																						
Hankook AL10 295/80R22.5		•																						
Hankook AM06 11R22.5																								
Hankook DH03 295/80R22.5																								
Hankook DH06 11R22.5																								
Hankook DH16 11R22.5																								
Hankook DL10 295/80R22.5		•																						
Hankook DM03 11R22.5																								
Hankook DM09 11R22.5																								
Hankook Z35A 11R22.5																								
Haulmax ATT101 11R22.5		•																						
Haulmax ATT202 11R22.5		•																						
Haulmax ATT307 11R22.5																								
Hilo 660 11R22.5																								
Jinyu JY601 11R22.5																								
Kumho KRD01 11R22.5																								
Loadrunner LR835D 11R22.5																								
Michelin 11R22.5		•																						
Michelin 295/80R22.5		•	•																					
O'Green AG677 11R22.5		•																						
Triangle TR666 11R22.5																								
Triangle TR668 11R22.5		•	•	•																				
Triangle TR688 11R22.5		•	•	•																				
Triangle TRS01 11R22.5		•																						
Yokohama TY517 11R22.5																								

A cell that is denoted by a '•' indicates a permissible combination of drive and trailing unit tyres. Cells that are blank are not permitted.

Retread tyres are permitted on the steer axle.

Retread or regroove tyres are permitted on drive and trailer axles, provided they are certified by the manufacturer that its performance is equivalent to a new tyre.

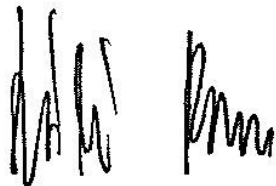
Tyre load ratings must be appropriate for the axle mass.

Tyres listed herein are specific for PBS application number V170215.

A different list of tyres will apply for other combination types and different PBS application numbers.

Declaration

I, Laszlo Bruzsa Chief Engineer, delegate of the National Heavy Vehicle Regulator approve this PBS Vehicle Approval PBS–V170215 –VA7204.



Laszlo (Les) Bruzsa

Chief Engineer

National Heavy Vehicle Regulator

Dated: 23/12/19

Revision table

N	VA	Vers	Brief description	Date
1	7204	1A	First issue.	23/12/19

General access for a specified PBS vehicle

The vehicle combination(s) listed in this PBS Vehicle Approval qualify for general access to the road network under the *specified PBS vehicle* provisions of the Heavy Vehicle National Law. A specified PBS vehicle must comply with all applicable requirements of Schedule 1 of the *Heavy Vehicle (Mass, Dimension and Loading) National Regulation* (HV(MDL)NR).

Specified PBS vehicle mass limits

1. The maximum allowable mass of a specified PBS vehicle is the lesser of the maximum PBS Level 1 GML stated in this Vehicle Approval and the relevant mass limit prescribed in Part 1, section 2, Schedule 1 of the HV(MDL)NR.
2. The maximum allowable mass of an axle group on a specified PBS vehicle is the lesser of the maximum PBS Level 1 GML axle group mass limit stated in this Vehicle Approval and the axle group mass limit prescribed in “Table 1—Axle mass limits table” in Schedule 1 of the HV(MDL)NR.
3. The maximum allowable mass between any two axles or axle groups on a specified PBS vehicle is the relevant prescribed mass limit in “Table 2—Axle spacing mass limits general table” in Schedule 1 of the HV(MDL)NR.

Specified PBS vehicle operating conditions

1. When operating as a general access vehicle, a specified PBS vehicle must comply with all operating conditions of its Vehicle Approval that apply at Level 1. This includes payload heights, the drive axle mass requirement, approved tyre options and all operating conditions that do not specify a level of access.
2. The regulation includes a requirement about towing ratios. Loading and unloading must be managed so that the trailer mass does not exceed the mass of the towing vehicle.

For more information

For more information visit our [PBS vehicle access permit page](#) under Access management.

Disclaimer

The information on this page is general guidance only and does not constitute legal advice. Consider whether you require Independent legal advice to address your particular circumstances.

Important information

As per Heavy Vehicle National Law Section 153, the driver must keep in the driver's possession a copy of this Vehicle Approval and be able to produce it for inspection by compliance officers. Penalties apply.

If changes or modifications are required, these are limited to the specifications contained in the relevant PBS Design Approval and the Application for Design Approval Part A and B. Contact the applicant (see the cover page on this document) for information related to the allowed specifications.

A change of components and/or dimensions must be certified by an approved PBS certifier and an updated version of this Vehicle Approval must be obtained. A change of tyres, outside of the list contained on this Vehicle Approval, also requires approval but will not require an inspection by a PBS certifier.

Road access

This is not an authorisation to access the road network. You must comply with the relevant Notice or obtain an access permit.

Please note that if you add vehicles to a PBS Vehicle Approval you will need to update the access permit to reflect the latest Vehicle Approval. If the new vehicles have different masses or dimensions to what is already approved, the NHVR will have to seek Road Manager consent again; which may extend the time required to issue the new permit.

For more information on the PBS Truck and Dog Notice visit [National class 2 PBS level 1 and 2A truck and dog trailer authorisation notice 2016](#).

To apply for an access permit, visit the [NHVR Portal](#). You must supply a route ID when applying for an access permit. Use Route Planner to obtain your route ID, you can do this as part of the permit application process in the [NHVR Portal](#).

For further assistance please visit our website at www.nhvr.gov.au or call 1300 MYNHVR (1300 696 487).

For queries relating to this document please contact the PBS Coordinator at pbs@nhvr.gov.au.

Transfer of Vehicle Approval

When applying for an access permit for a PBS vehicle, a PBS Vehicle Approval must be in the name of the company that operates the vehicle on the road.

If/ when a PBS combination is sold, the PBS Vehicle Approval has to be transferred across to the new owner.

To transfer a PBS Vehicle Approval to a new owner, use a [Vehicle Approval transfer application form](#).