

PBS Vehicle Approval

Heavy Vehicle National Law Section 23

Heavy Vehicle (General) National Regulation Section 17

IMPORTANT

- This vehicle must be operated under a Notice or an access permit unless compliant with the Specified PBS Vehicle provision.
- The driver must carry a copy of this PBS Vehicle Approval and an associated access permit or notice and be able to produce readable copies (electronic or hard copy) if requested by Authorised Officers.
- All vehicle units in a combination (prime movers, trailers, dollies, etc.) must be listed on this VA.
- The driver must be able to identify the specific combination being driven within the VA.
- Failure to comply with the above can incur penalties for the operator and driver.

13 November 2024

Ref No: PBS – VA18249 – V240411 – v1A

This PBS Vehicle Approval modifies any previously issued approval for the vehicle(s) listed herein operating under Design Application Number V240411 .

Design Approval Holder	Peter Eady ANDREW O'BRIEN & ASSOCIATES	Address	Suite 2.03 789 Toorak Rd Hawthorn East VIC 3123
------------------------	--	---------	--

Design Application	V240411	Vehicle	3-axle truck 4-axle dog
Load	General Freight (Mixed Freight); General Freight (Uniform Density); Quarry and Bulk; Containers (Uniform Density); Containers (Mixed Freight); Other; Woodchip	Length (mm)	≤ 19300
Assessor	Peter Eady	Height (mm)	≤ 4300

Combination Matrix

For each Truck and Trailer, the corresponding drawing reference number, dimension set number and mass table number/s are listed below. The dimension set number e.g., 'Option 2' indicates the maximum allowable payload heights and/or allowable tyre options for the corresponding Truck and Trailer - refer to the Operating Conditions and Approved Tyre Options sections on this VA.

New VINs added in this VA are listed in bold.

Truck 1	Make	GCM (t)
6F5000000RA488877	KW	70

Trailer 1	ATM (t)
6294AXD0GRR248008	34

	Trailer 1
Truck 1	24090 Option 2 Table 1, 2

Table 1
Truck 1 and Trailer 1

Mass Limits	Level 1		Axle Group Masses	Level 1		
				GML	CML	HML
GML (t)	50.5		Steer (t)	6.5	6.5	6.5
CML (t)	50.5		Drive (t)	16.5	17.0	17.0
HML (t)	50.5		Trailer Front (t)	16.5	17.0	17.0
Bridge Assessment	Tier 1		Trailer Rear (t)	16.5	17.0	17.0
The mass across axle groups is limited to -						
Axle Groups				GML	CML	HML
2 to 4				44.25	45.25	45.75
3 to 4				27.75	28.75	28.75

Table 2
Truck 1 and Trailer 1

Mass Limits	Level 2		Axle Group Masses	Level 2		
				GML	CML	HML
GML (t)	56.0		Steer (t)	6.5	6.5	6.5
CML (t)	57.5		Drive (t)	16.5	17.0	17.0
HML (t)	57.5		Trailer Front (t)	16.5	17.0	17.0
Bridge Assessment	Tier 1		Trailer Rear (t)	16.5	17.0	17.0

Operating conditions

The NHVR approves the vehicles listed herein for the level(s) shown in the “Mass Limits” table with the following operating conditions:

1. The total combination mass must not exceed the limits in the “Mass Limits” table.
2. The axle group masses must not exceed the limits in the “Axle Group Masses” table.
3. If the “Mass Limits” table specifies Tier 2 or Tier 3, a bridge assessment is required.
4. Maximum payload heights measured from the ground must not exceed: (m)

Option 2	Truck			
	Water level payload	Heaped payload	Water level payload	Heaped payload
Truck Deck Height (mm)	Level 1		Level 2	
1311-1380	2.580	2.860	2.900	3.180

Option 2	Trailer			
	Water level payload	Heaped payload	Water level payload	Heaped payload
Trailer Deck Height (mm)	Level 1		Level 2	
1371-1430	2.640	2.920	2.840	3.120

5. 6.5 tonne complying steer axle requirements:
 - an engine that complies with the engine emission standards of Australian Design Rule (ADR) 80/01 (Euro 4) or a later version of ADR 80; and
 - a front underrun protection device (FUPD) that complies with UN ECE Regulation 93 or ADR 84; and
 - a cabin that complies with UN ECE Regulation 29.
6. Concessional Mass Limits (CML) requirements:
 - a National Heavy Vehicle Accreditation Scheme (NHVAS) – Mass Management Accreditation must be in force for all motor vehicles listed on this vehicle approval.
7. Higher Mass Limits (HML) requirements:
 - for tandem axles groups, road friendly suspensions.
8. When operating at Level 1, there is a minimum mass requirement for the drive axle group. The mass on the drive axle group must be at least 25.9% of the total combination mass e.g. at 50.5t total combination mass, $50.5 \times 0.259 = 13.08\text{t}$ is required on the drive axle group. This clause does not apply to an unladen vehicle.
9. When operating at Level 2, there is a minimum mass requirement for the drive axle group. The mass on the drive axle group must be at least 19.7% of the total combination mass e.g. at 56t total combination mass, $56 \times 0.197 = 11.03\text{t}$ is required on the drive axle group. This clause does not apply to an unladen vehicle.

Exemptions

Heavy Vehicle National Law Section 24

Heavy Vehicle (General) National Regulation Section 28

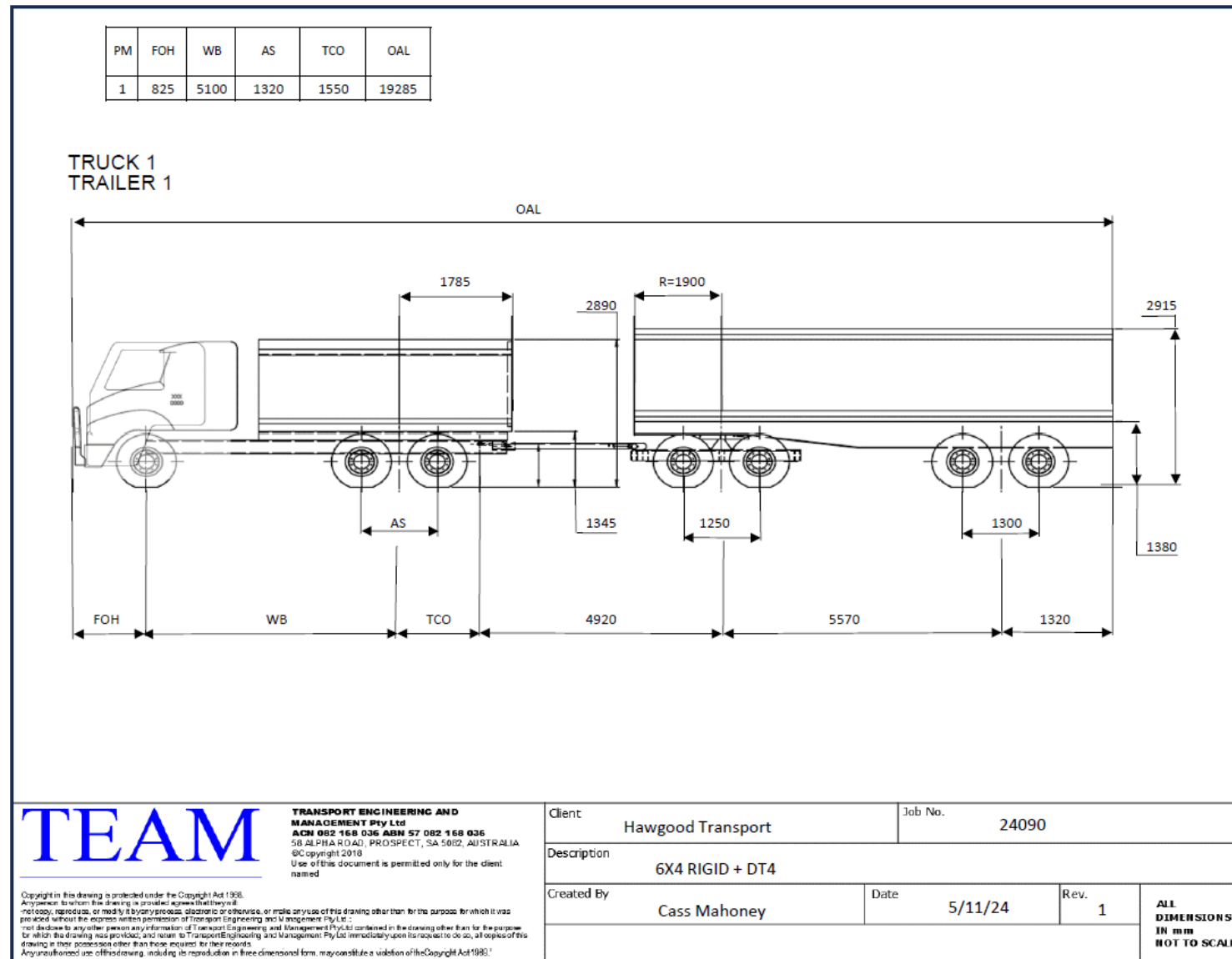
The following table lists exemptions from prescribed vehicle standards that have been granted for the vehicle(s) in this vehicle approval.

Exemptions	
ADR	NA
HV(MDL)NR	Schedule 6, Section 3 (Length – General)
HV(VS)NR	NA

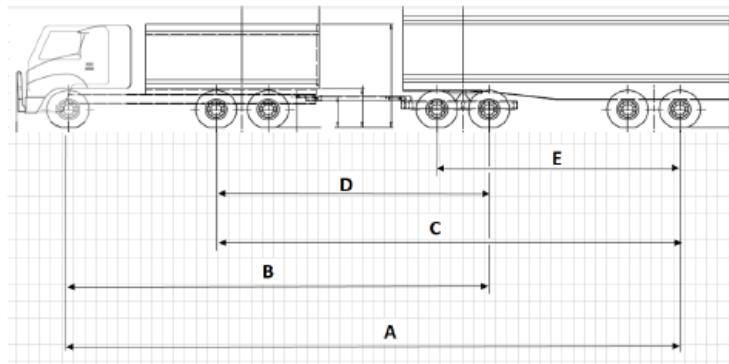
ADR Australian Design Rules

HV(MDL)NR *Heavy Vehicle (Mass, Dimension and Loading) National Regulation*

HV(VS)NR *Heavy Vehicle (Vehicle Standards) National Regulation*



PM	DISTANCE				
	A	B	C	D	E
1	18460	12195	13350	7755	6845
2					
3					
4					



	1to2	1to3	1to4	2to3	2to4	3to4
Dist	5760	12195	17790	7755	13350	6845
GML	22.5	39	55.5	33	49.5	33
LVL 1 M	29.78	49.085	50.29	35.765	45.85	33.035
Diff	okay	okay	5.21	okay	3.65	okay
LVL 2 M	29.78	49.085	56.185	35.765	49.525	33.035
Diff	okay	okay	okay	okay	okay	okay

Approved tyre options –Option 2

Steer –

- **11R22.5** (Load Index **149** or higher, single configuration)
- **295/80R22.5** (Load Index **149** or higher, single configuration)
- **305/70R22.5** (Load Index **149** or higher, single configuration)
- **315/70R22.5** (Load Index **149** or higher, single configuration)
- **315/80R22.5** (Load Index **149** or higher, single configuration)
- **385/55R22.5** (Load Index **149** or higher, single configuration)
- **385/65R22.5** (Load Index **149** or higher, single configuration)

Drive –

- **11R22.5** (Load Index **140** or higher, dual configuration)
- **255/70R22.5** (Load Index **140** or higher, dual configuration)
- **275/70R22.5** (Load Index **140** or higher, dual configuration)
- **275/80R22.5** (Load Index **140** or higher, dual configuration)
- **295/60R22.5** (Load Index **140** or higher, dual configuration)
- **295/80R22.5** (Load Index **140** or higher, dual configuration)
- **305/70R22.5** (Load Index **140** or higher, dual configuration)
- **315/80R22.5** (Load Index **140** or higher, dual configuration)
- **265/70R19.5** (Load Index **140** or higher, dual configuration)
- **285/70R19.5** (Load Index **140** or higher, dual configuration)
- **305/70R19.5** (Load Index **140** or higher, dual configuration)

Trailer –

- **11R22.5** (Load Index **140** or higher, dual configuration)
- **255/70R22.5** (Load Index **140** or higher, dual configuration)
- **275/70R22.5** (Load Index **140** or higher, dual configuration)
- **275/80R22.5** (Load Index **140** or higher, dual configuration)
- **295/60R22.5** (Load Index **140** or higher, dual configuration)
- **295/80R22.5** (Load Index **140** or higher, dual configuration)
- **305/70R22.5** (Load Index **140** or higher, dual configuration)
- **315/80R22.5** (Load Index **140** or higher, dual configuration)
- **265/70R19.5** (Load Index **140** or higher, dual configuration)
- **285/70R19.5** (Load Index **140** or higher, dual configuration)
- **305/70R19.5** (Load Index **140** or higher, dual configuration)
- **9.5R17.5** (Load Index **140** or higher, dual configuration)
- **235/75R17.5** (Load Index **140** or higher, dual configuration)

Tyre load index and inflation pressure must be appropriate for the axle mass (inflation pressures must be within legal inflation limits).

Retread tyres are only permitted on the drive and trailer axles.

Tyres listed herein are specific for PBS application number V240411.

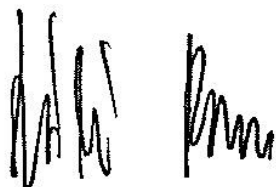
A different list of tyres will apply for other combination types and different PBS application numbers.

Axle spacings for as-built combinations - Truck and Dog (1-2-2-2)

Truck	Trailer	1-2	2-3	3-4	4-5	5-6	6-7	OAL
1	1	4440	1320	5185	1250	4295	1300	19285

Declaration

I, Laszlo Bruzsa Chief Engineer, delegate of the National Heavy Vehicle Regulator, approve this PBS Vehicle Approval PBS–V240411 –VA18249.



Laszlo (Les) Bruzsa
Chief Engineer
National Heavy Vehicle Regulator
Dated: 13/11/24

Revision table

N	VA	Vers	Brief description	Date
1	18249	1A	First issue.	13/11/24

General access for a specified PBS vehicle

The vehicle combination(s) listed in this PBS Vehicle Approval qualify for general access to the road network under the *specified PBS vehicle* provisions of the Heavy Vehicle National Law. A specified PBS vehicle must comply with all applicable requirements of Schedule 1 of the *Heavy Vehicle (Mass, Dimension and Loading) National Regulation* (HV(MDL)NR).

Specified PBS vehicle mass limits

1. The maximum allowable mass of a specified PBS vehicle is the lesser of the maximum PBS Level 1 GML stated in this Vehicle Approval and the relevant mass limit prescribed in Part 1, section 2, Schedule 1 of the HV(MDL)NR.
2. The maximum allowable mass of an axle group on a specified PBS vehicle is the lesser of the maximum PBS Level 1 GML axle group mass limit stated in this Vehicle Approval and the axle group mass limit prescribed in “Table 1—Axle mass limits table” in Schedule 1 of the HV(MDL)NR.
3. The maximum allowable mass between any two axles or axle groups on a specified PBS vehicle is the relevant prescribed mass limit in “Table 2—Axle spacing mass limits general table” in Schedule 1 of the HV(MDL)NR.

Specified PBS vehicle operating conditions

1. When operating as a general access vehicle, a specified PBS vehicle must comply with all operating conditions of its Vehicle Approval that apply at Level 1. This includes payload heights, the drive axle mass requirement, approved tyre options and all operating conditions that do not specify a level of access.
2. The regulation includes a requirement about towing ratios. Loading and unloading must be managed so that the trailer mass does not exceed the mass of the towing vehicle.

For more information

For more information visit our [PBS vehicle access permit page](#) under Access management.

Disclaimer

The information on this page is general guidance only and does not constitute legal advice. Consider whether you require Independent legal advice to address your particular circumstances.

Important information

The driver must keep in the driver's possession a copy of this Vehicle Approval and be able to produce it for inspection by compliance officers. Penalties can apply.

If changes or modifications are required, these are limited to the specifications contained in the relevant PBS Design Approval and the Application for Design Approval Part A and B. Contact the applicant (see the cover page on this document) for information related to the allowed specifications.

A change of components and/or dimensions must be certified by an approved [PBS Certifier](#) and an updated version of this Vehicle Approval must be obtained. A change of tyres, outside of the list contained on this Vehicle Approval, also requires approval but will not require an inspection by a PBS Certifier.

If VA contains multiple tyre option tables, all tyre selections must be chosen from the same tyre options table. Tyres from different tyre options tables are not interchangeable.

Road access

The PBS Vehicle Approval is not an authorisation to access the road network. You must comply with the relevant Notice or obtain an access permit. To apply for an access permit, visit the [NHVR Portal](#).

For more information on PBS Notices visit:

[National Class 2 PBS Level 1 & 2a Truck and Dog Trailer Authorisation Notice 2021 \(No.1\)](#)

[National Class 2 Performance Based Standards \(High Productivity\) Authorisation Notice](#)

[National Class 2 Performance Based Standards \(Tier 1\) Authorisation Notice 2021](#)

If you add vehicles to your PBS Vehicle Approval, the PBS Vehicle Approval number may change depending on the new vehicles added. If the PBS Vehicle Approval number has changed, and your access permit references a PBS Vehicle Approval number, your access permit will need to be amended to reflect the latest Vehicle Approval number. Note that most truck and dog access permits will not reference a PBS Vehicle Approval number and therefore changes to the Vehicle Approval do not require an update to the access permit. For more information, watch [Adding vehicles to a PBS Vehicle Approval](#) video on our YouTube channel.

For more information, please visit our website at www.nhvr.gov.au or call 13 NHVR (13 64 87).

For queries relating to this document please contact the PBS Operations Team at pbs@nhvr.gov.au.

Manage your PBS Vehicle Approval

Please visit our [website](#) to view a list of available options and associated forms to manage your PBS Vehicle Approval.