

# Learning module 4

---

- Please note that the test is in ENGLISH ONLY and will contain some questions in relation to this module
- Veuillez noter que le test est UNIQUEMENT en ANGLAIS et contiendra des questions relatives à cette présentation

**“main gear” = train principal**

**“nose gear” = roulette du nez**





# **Runway emergency situations**

---

**English version**

# Types of Emergency

---

- Runway Incursion
- Runway Excursion **sortie de piste**
- FOD to aircraft and debris on the runway **Foreign Object Damage**
- Animals/birds on or in the vicinity of the runway **“vicinity” = à proximité**
- Flapless landing **“flaps” = volets** **“flapless” = sans volets** **“failure” = panne**
- Burst tyre **“tyre” = pneu** **“burst” = éclaté**
- Nose wheel steering gear failure **“nose wheel” = roulette de nez**
- Landing only with one engine operating **“atterrissage avec un seul moteur”**  
**“landing gear” = train**



# Runway Incursion

---



A runway incursion is any occurrence at an aerodrome involving the incorrect and/or UNAUTHORIZED presence of an aircraft, vehicle or person on the protected area of a surface designated for the landing and take-off of aircraft.

**“remise de gaz” = go around**

**“toucher” = touch and go**

# Runway Excursion

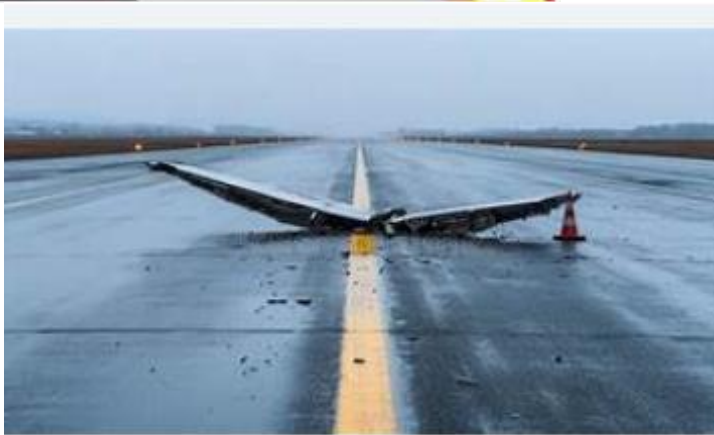
---



A runway excursion is a veer-off or over-run from the runway surface.

These surface events occur while an aircraft is taking off or landing

# FOD and debris on runway



Foreign Object Damage is caused by debris which is defined as any object, particle, substance or agent that is not where it is supposed to be.

In aviation it is a hazard to aircraft, equipment, cargo or personnel and can result in the aircraft crashing, as did the Air France Concorde in Paris

# Birds and animals on or near a runway



**“near” = près de**  
**“threat” = menace**  
**“during” = pendant**

Wildlife, especially birds, poses a significant threat to aircraft, particularly during takeoff and landing phases.

Bird strikes can cause catastrophic engine failures, structural damage, and, in extreme cases, lead to accidents.



# Flapless landing

---



**“often” = souvent**

Flapless landing is often associated with a hydraulic systems failure.

The plane will land at a higher than normal speed leading to a longer landing distance and the risk of the brakes overheating and burst tyres.

**“higher speed” = vitesse majorée**

**“longer” = plus long**

**“brakes” = freins**

**“overheating” = surchauffe**

**“burst tyre” = pneu éclaté**

# Burst tyres and brake fire

---



Burst tyres and brake fire following overheating are often associated with the aircraft having to brake in emergency when landing

**acceleration stop /  
cancelled take-off  
= rejected take-off (RTO)**

# Nose wheel steering failure

---



**“steering” = direction**

The nose wheel steering will not function if there is a hydraulic failure and the aircraft will need to be towed back on to a stand using a tug

**“towed” = remorqué**

**“tug” = tracteur-remorqueur**

“engine out” = 1 engine en panne”

# One engine out landing

---

“twin engine plane” = avion bimoteur



- Landing a twin-engine aircraft with one engine not working is more delicate for the pilot and the risk of a runway excursion is greater

# **End of module**

