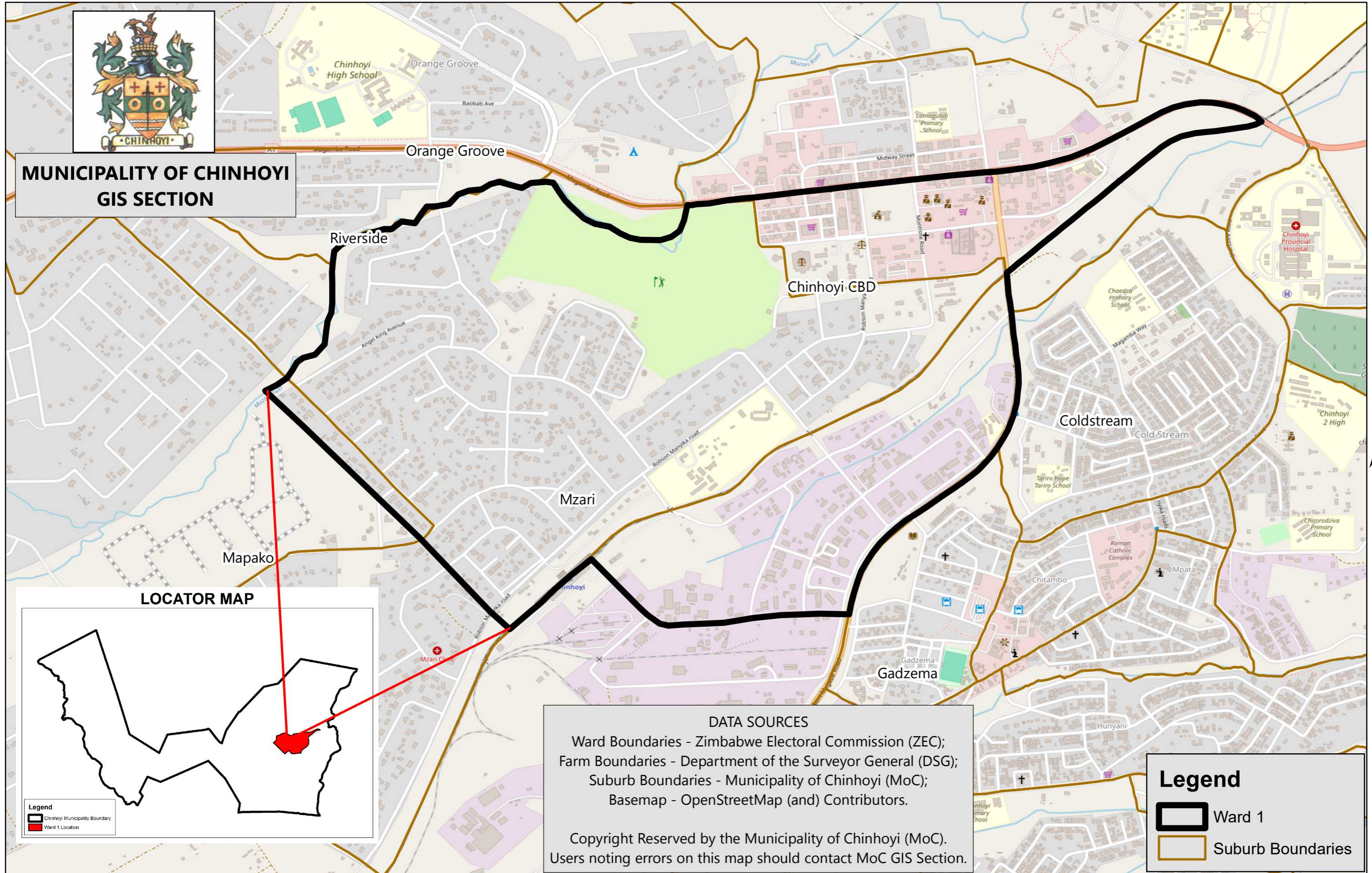


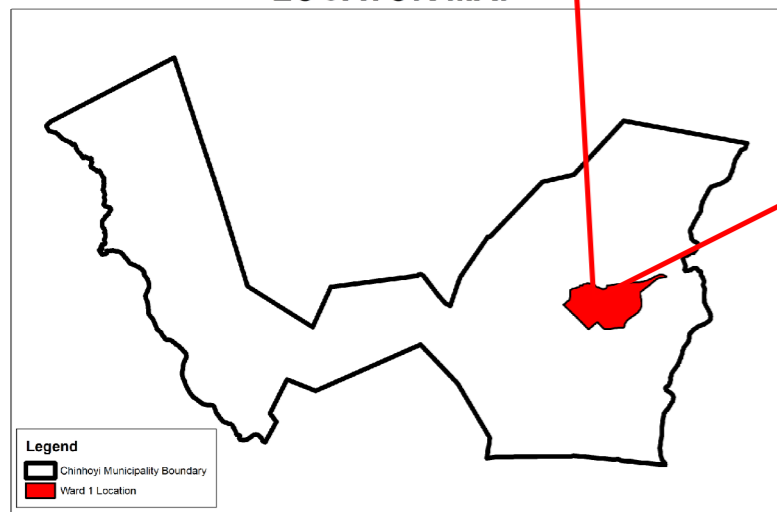
MUNICIPALITY OF CHINHOYI WARD 1



**MUNICIPALITY OF CHINHOYI
GIS SECTION**



LOCATOR MAP



Legend
 ◻ Chinhoyi Municipality Boundary
 ◻ Ward 1 Location

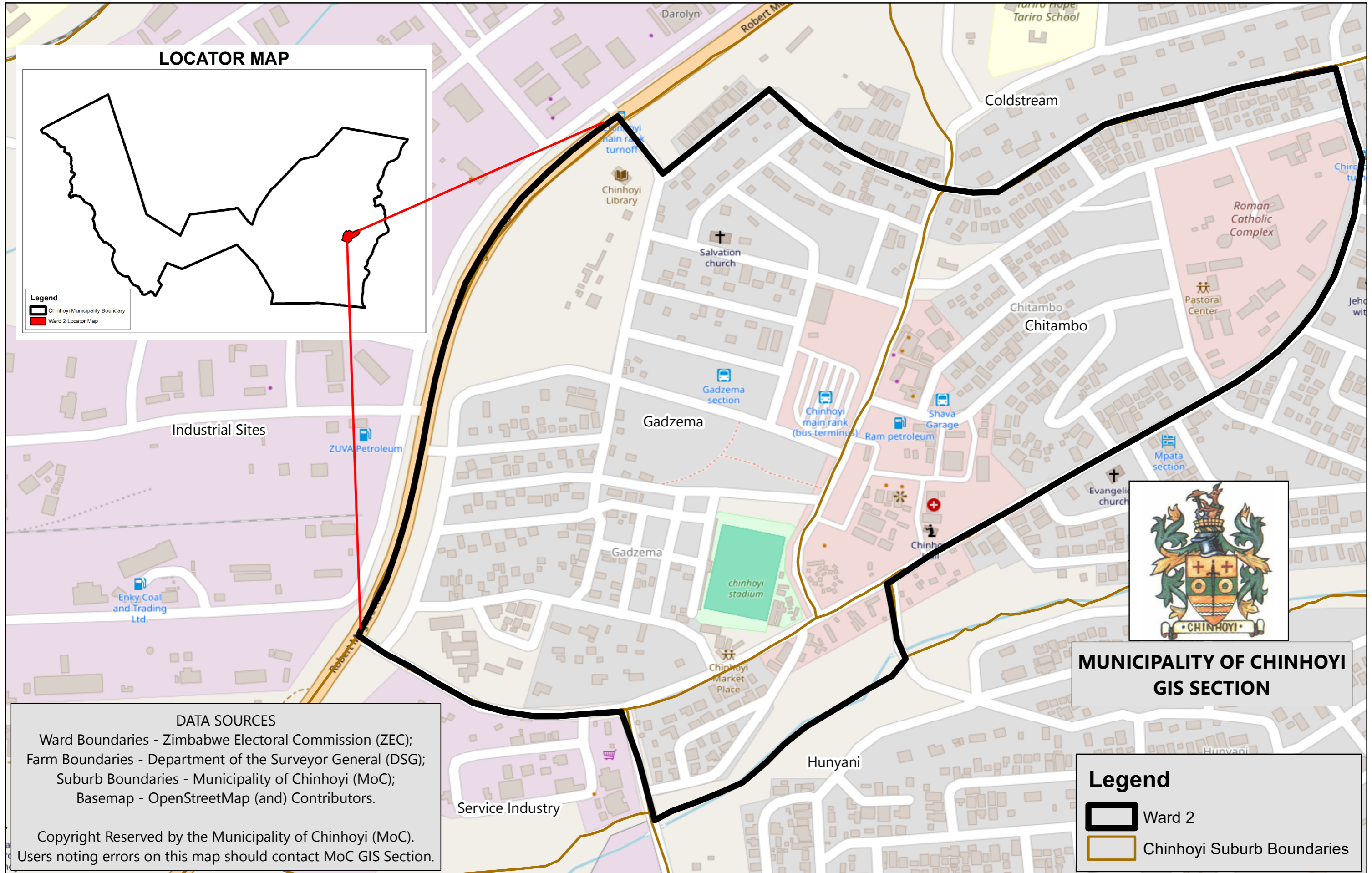
DATA SOURCES
 Ward Boundaries - Zimbabwe Electoral Commission (ZEC);
 Farm Boundaries - Department of the Surveyor General (DSG);
 Suburb Boundaries - Municipality of Chinhoyi (MoC);
 Basemap - OpenStreetMap (and) Contributors.

Copyright Reserved by the Municipality of Chinhoyi (MoC).
 Users noting errors on this map should contact MoC GIS Section.

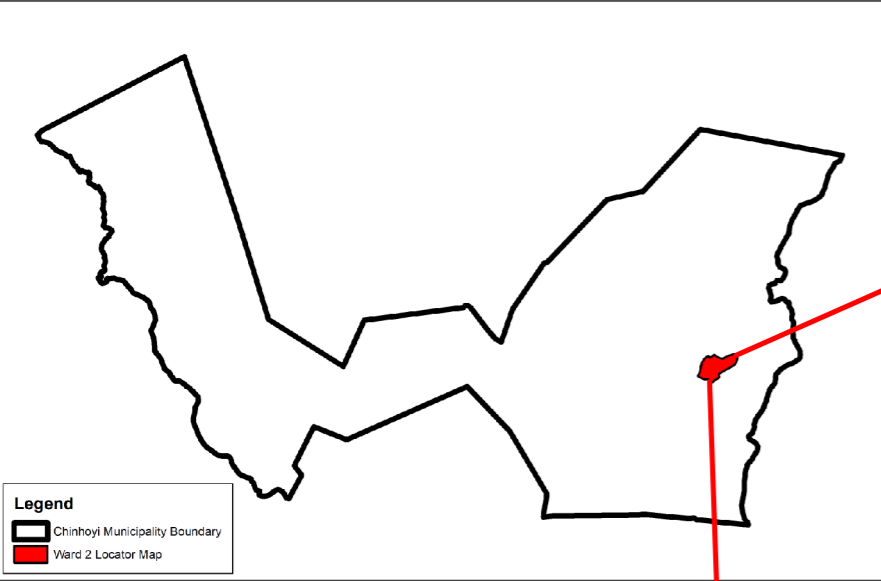
Legend
 ◻ Ward 1
 ◻ Suburb Boundaries



MUNICIPALITY OF CHINHOYI WARD 2

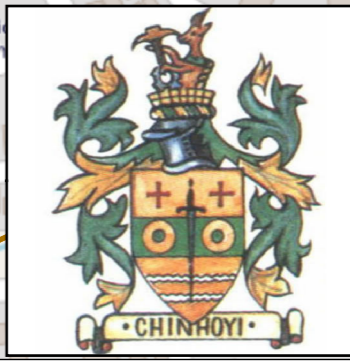


LOCATOR MAP



Legend
 [Black outline] Chinhoyi Municipality Boundary
 [Red dot] Ward 2 Locator Map

**MUNICIPALITY OF CHINHOYI
 GIS SECTION**



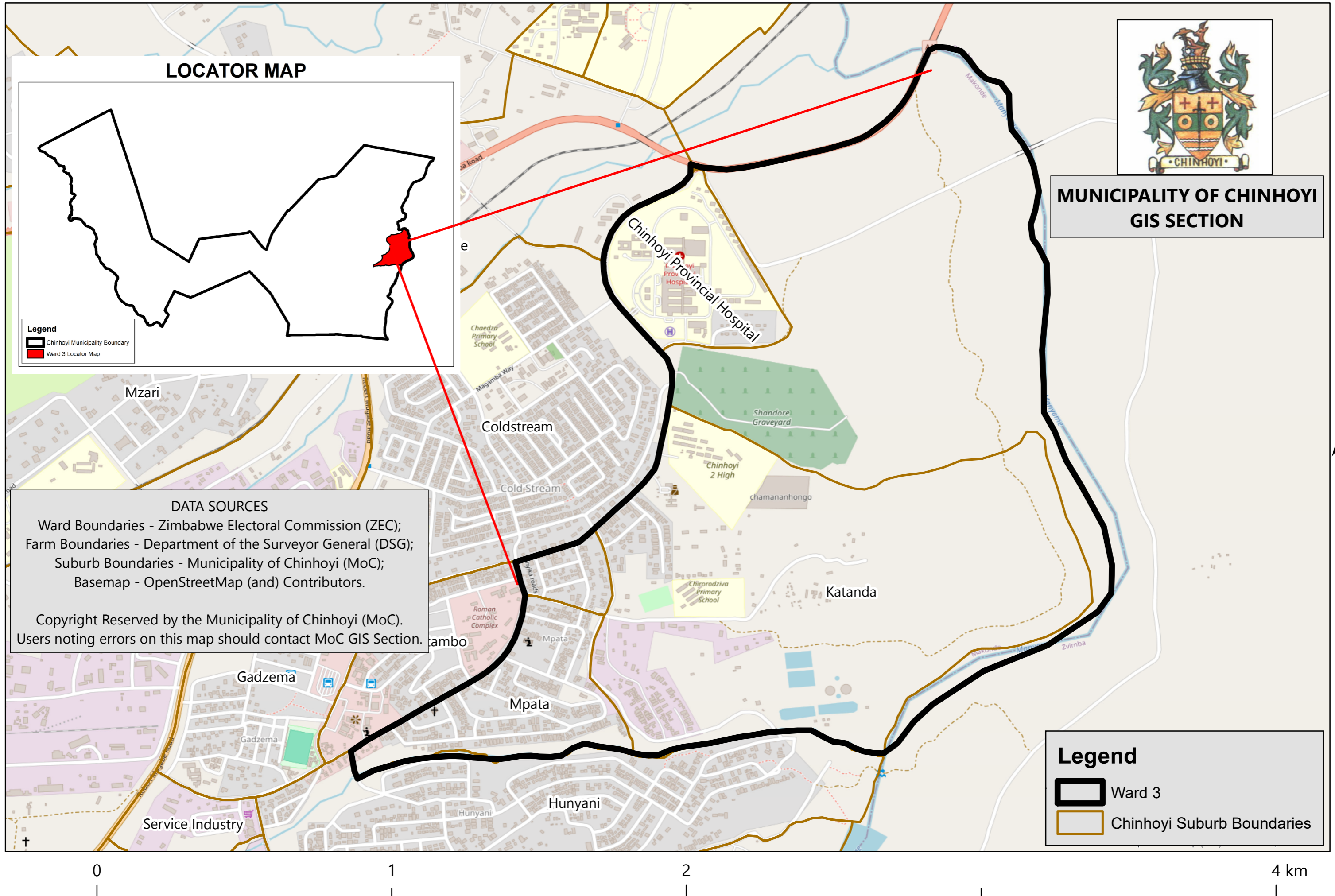
Legend
 [Thick black outline] Ward 2
 [Thin orange outline] Chinhoyi Suburb Boundaries

DATA SOURCES
 Ward Boundaries - Zimbabwe Electoral Commission (ZEC);
 Farm Boundaries - Department of the Surveyor General (DSG);
 Suburb Boundaries - Municipality of Chinhoyi (MoC);
 Basemap - OpenStreetMap (and) Contributors.

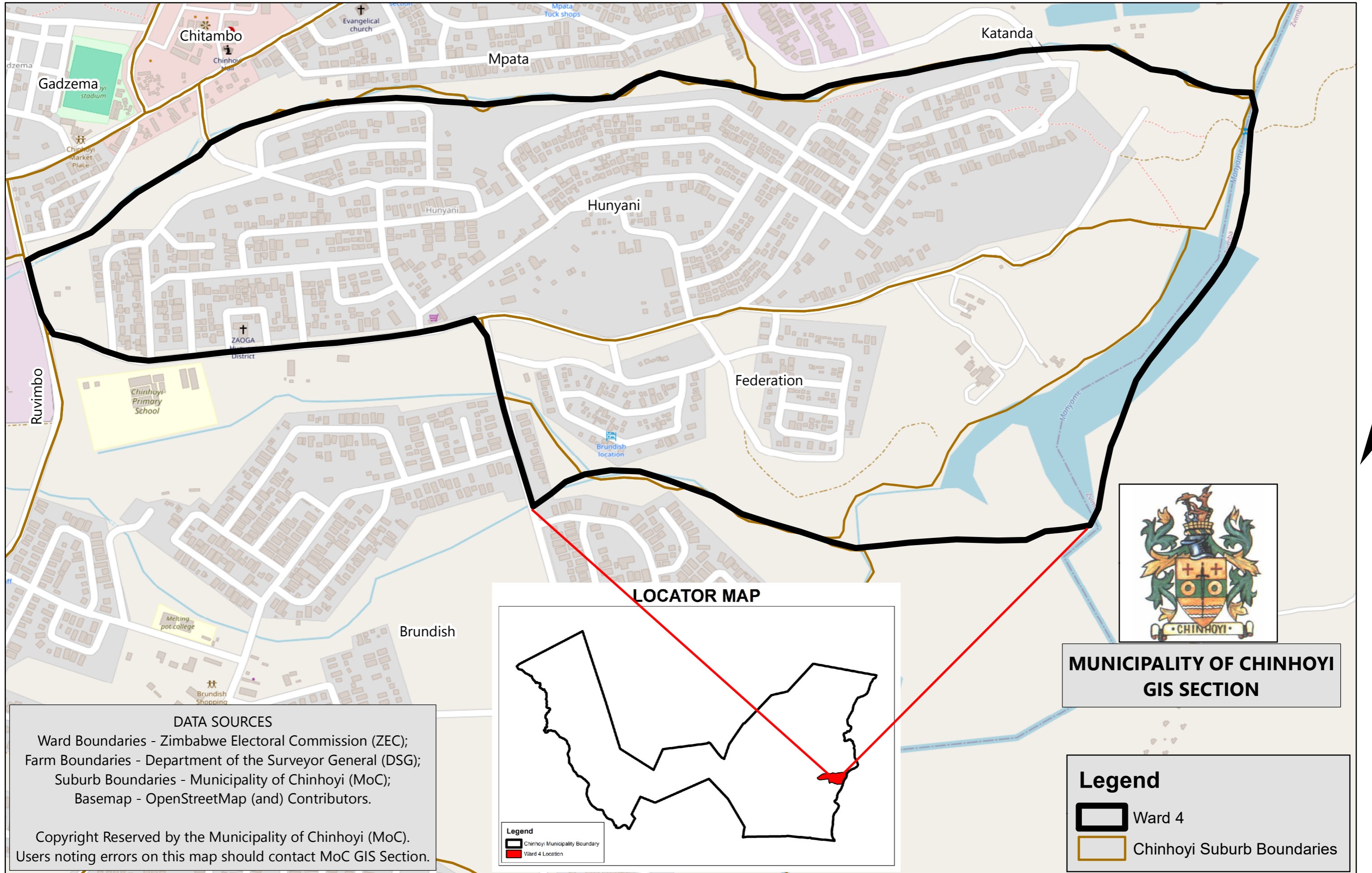
Copyright Reserved by the Municipality of Chinhoyi (MoC).
 Users noting errors on this map should contact MoC GIS Section.



MUNICIPALITY OF CHINHOYI WARD 3

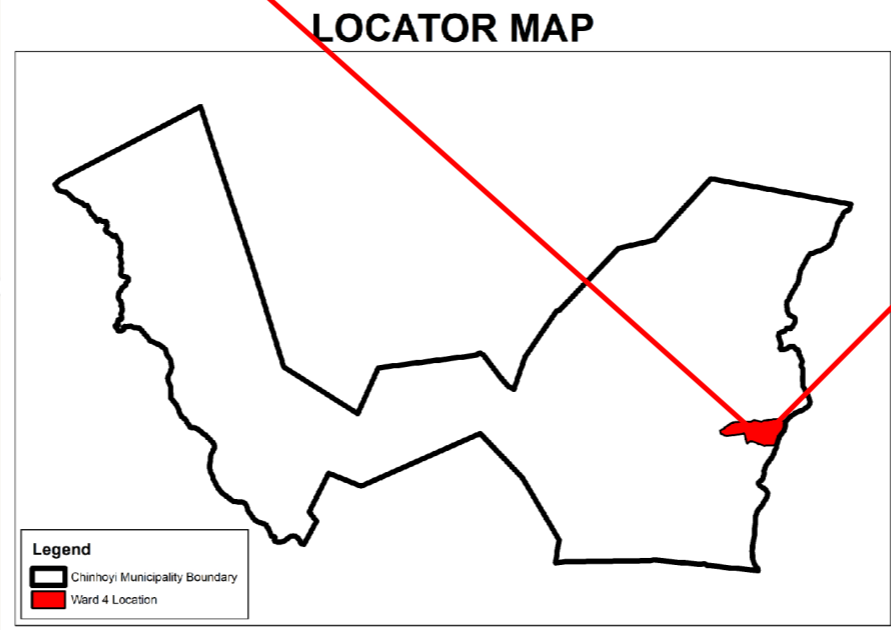



MUNICIPALITY OF CHINHOYI WARD 4



DATA SOURCES
 Ward Boundaries - Zimbabwe Electoral Commission (ZEC);
 Farm Boundaries - Department of the Surveyor General (DSG);
 Suburb Boundaries - Municipality of Chinhoyi (MoC);
 Basemap - OpenStreetMap (and) Contributors.

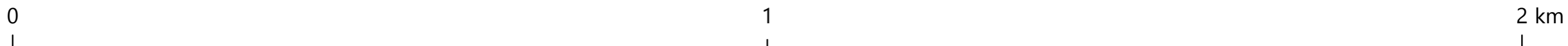
Copyright Reserved by the Municipality of Chinhoyi (MoC).
 Users noting errors on this map should contact MoC GIS Section.

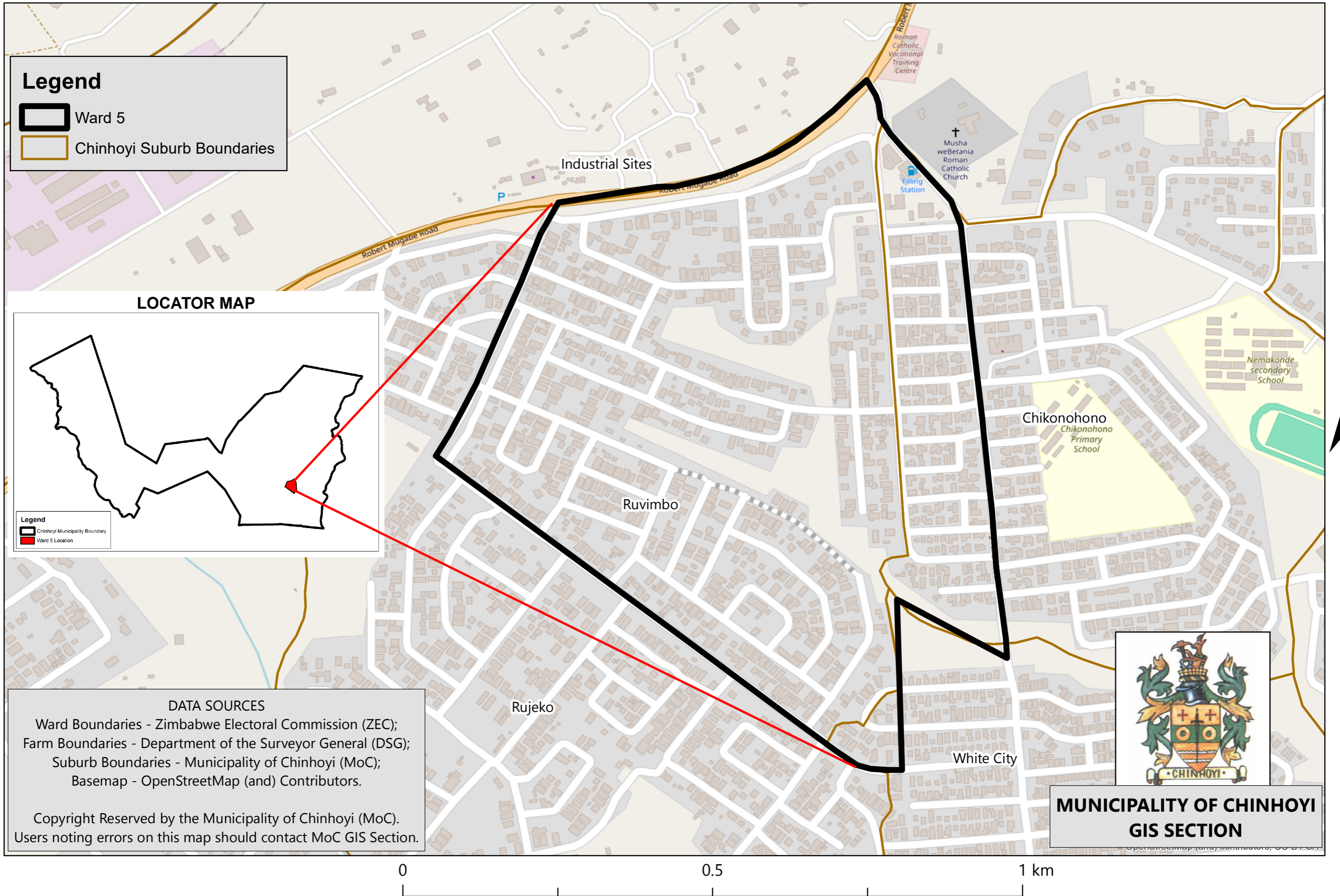
**MUNICIPALITY OF CHINHOYI
 GIS SECTION**

Legend

- Ward 4
- Chinhoyi Suburb Boundaries



MUNICIPALITY OF CHINHOYI WARD 5



Legend

- Ward 5
- Chinhoyi Suburb Boundaries

LOCATOR MAP

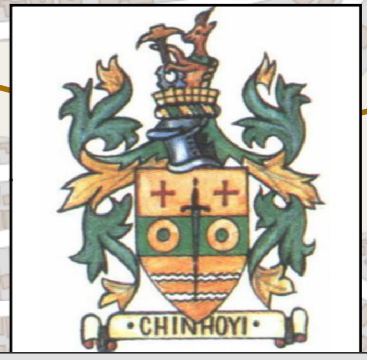
Legend

- Chinhoyi Municipality Boundary
- Ward 5 Location

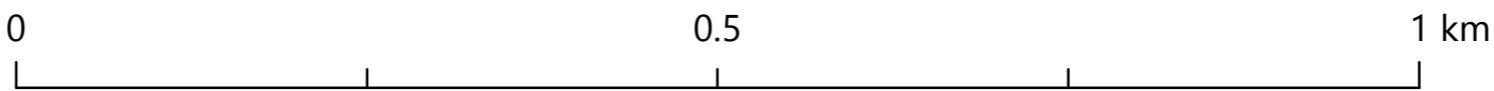
DATA SOURCES

- Ward Boundaries - Zimbabwe Electoral Commission (ZEC);
- Farm Boundaries - Department of the Surveyor General (DSG);
- Suburb Boundaries - Municipality of Chinhoyi (MoC);
- Basemap - OpenStreetMap (and) Contributors.

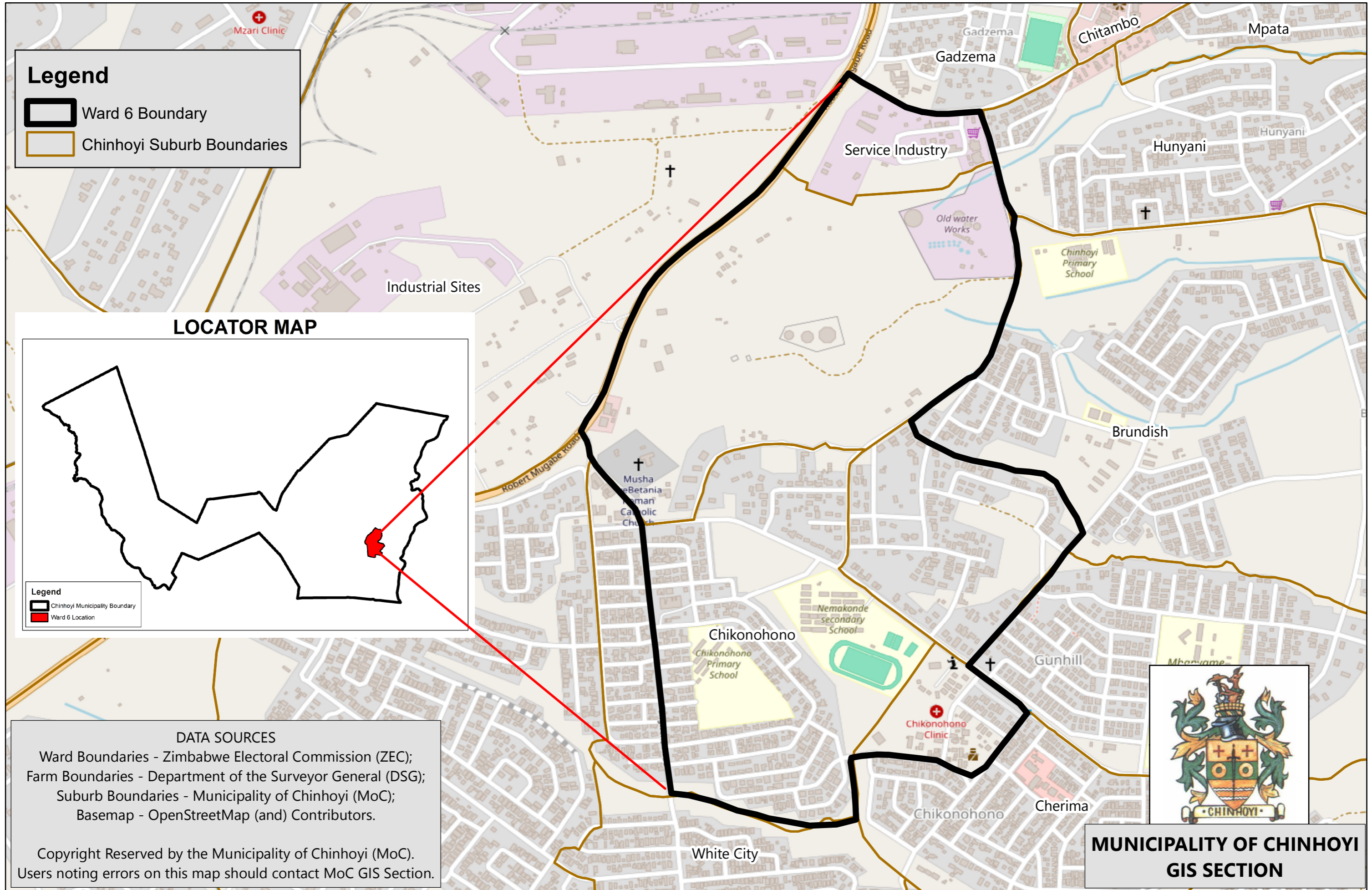
Copyright Reserved by the Municipality of Chinhoyi (MoC).
Users noting errors on this map should contact MoC GIS Section.



**MUNICIPALITY OF CHINHOYI
GIS SECTION**



MUNICIPALITY OF CHINHOYI WARD 6



Legend

- Ward 6 Boundary
- Chinhoyi Suburb Boundaries

LOCATOR MAP

Legend

- Chinhoyi Municipality Boundary
- Ward 6 Location

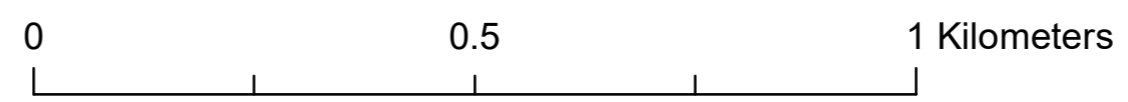
DATA SOURCES

Ward Boundaries - Zimbabwe Electoral Commission (ZEC);
Farm Boundaries - Department of the Surveyor General (DSG);
Suburb Boundaries - Municipality of Chinhoyi (MoC);
Basemap - OpenStreetMap (and) Contributors.

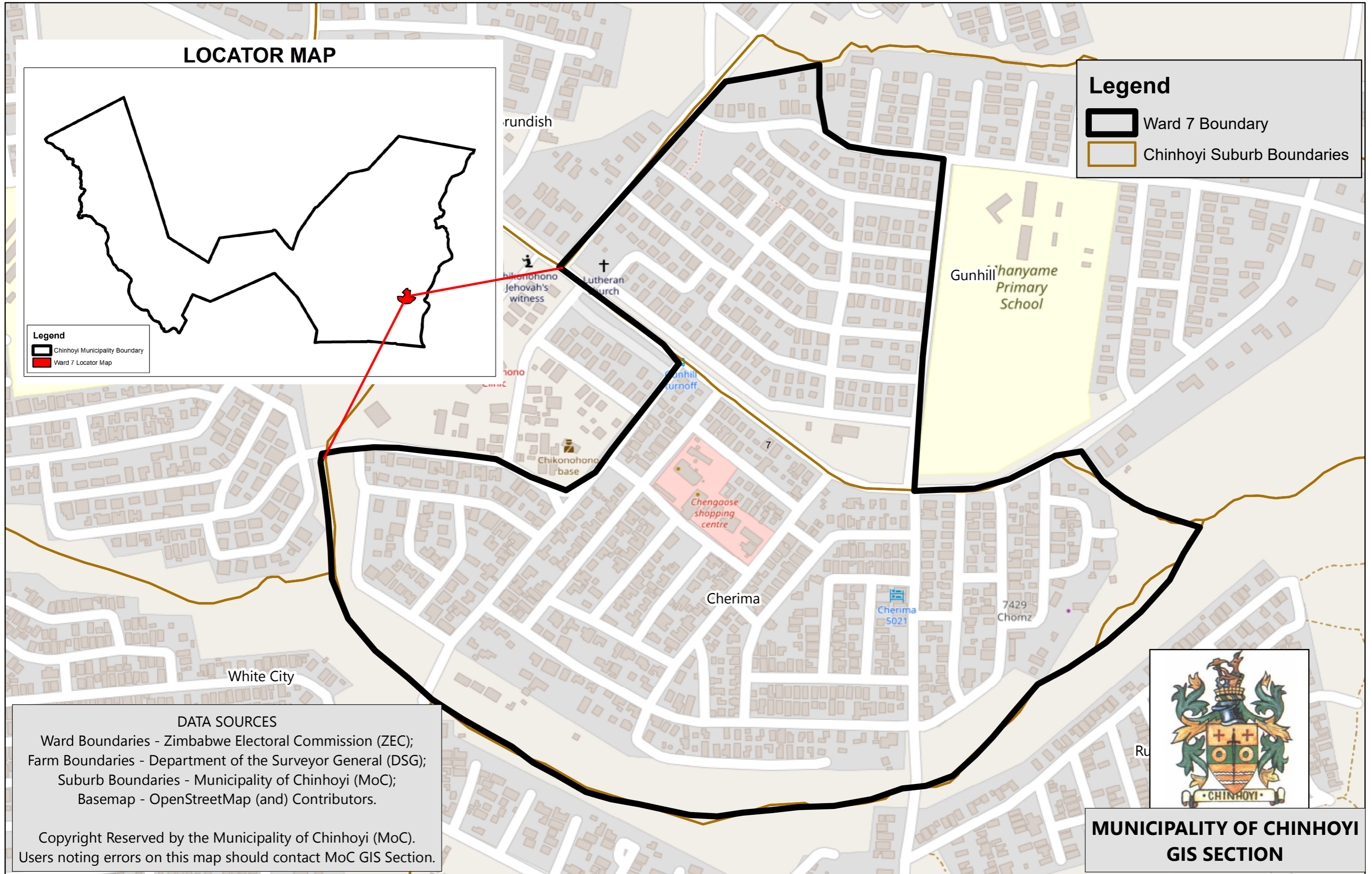
Copyright Reserved by the Municipality of Chinhoyi (MoC).
Users noting errors on this map should contact MoC GIS Section.



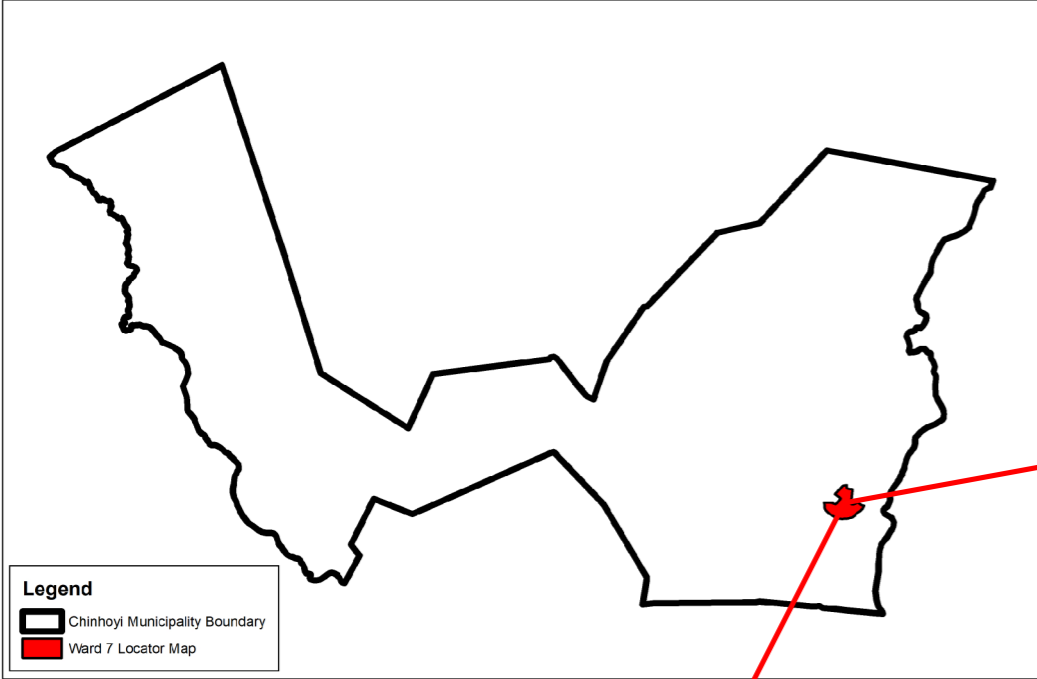
**MUNICIPALITY OF CHINHOYI
GIS SECTION**



MUNICIPALITY OF CHINHOYI WARD 7



LOCATOR MAP



Legend
 [Black outline] Chinhoyi Municipality Boundary
 [Red dot] Ward 7 Locator Map

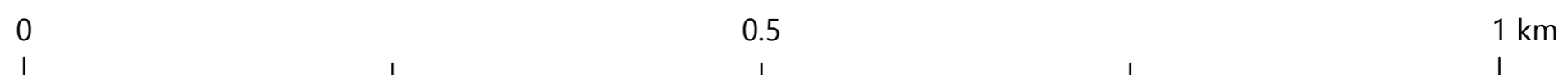
Legend
 [Thick black outline] Ward 7 Boundary
 [Thin orange outline] Chinhoyi Suburb Boundaries

DATA SOURCES
 Ward Boundaries - Zimbabwe Electoral Commission (ZEC);
 Farm Boundaries - Department of the Surveyor General (DSG);
 Suburb Boundaries - Municipality of Chinhoyi (MoC);
 Basemap - OpenStreetMap (and) Contributors.

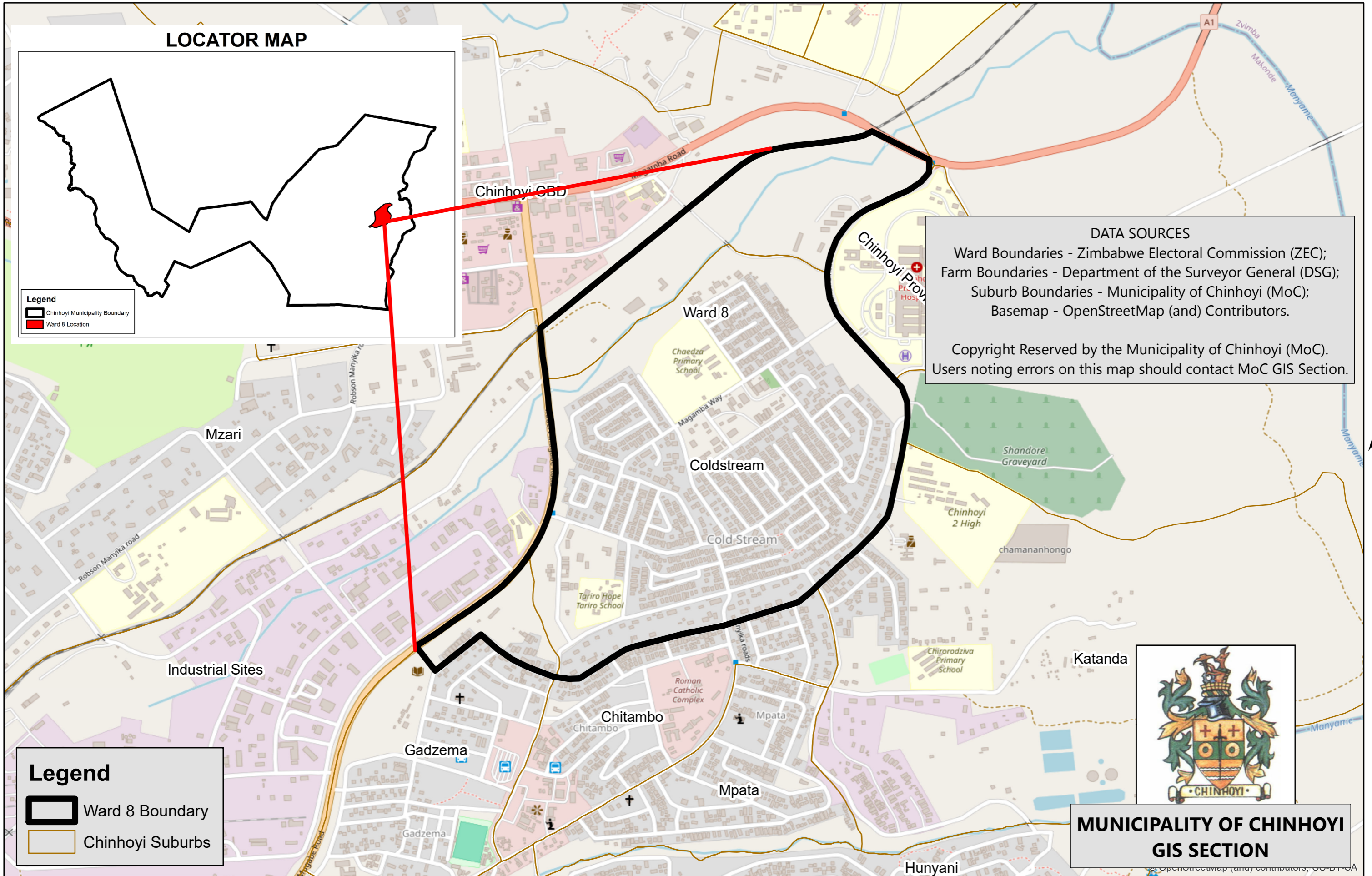
Copyright Reserved by the Municipality of Chinhoyi (MoC).
 Users noting errors on this map should contact MoC GIS Section.



**MUNICIPALITY OF CHINHOYI
 GIS SECTION**



MUNICIPALITY OF CHINHOYI WARD 8



LOCATOR MAP

Legend
Chinhoyi Municipality Boundary
Ward 8 Location

DATA SOURCES
Ward Boundaries - Zimbabwe Electoral Commission (ZEC);
Farm Boundaries - Department of the Surveyor General (DSG);
Suburb Boundaries - Municipality of Chinhoyi (MoC);
Basemap - OpenStreetMap (and) Contributors.

Copyright Reserved by the Municipality of Chinhoyi (MoC).
Users noting errors on this map should contact MoC GIS Section.

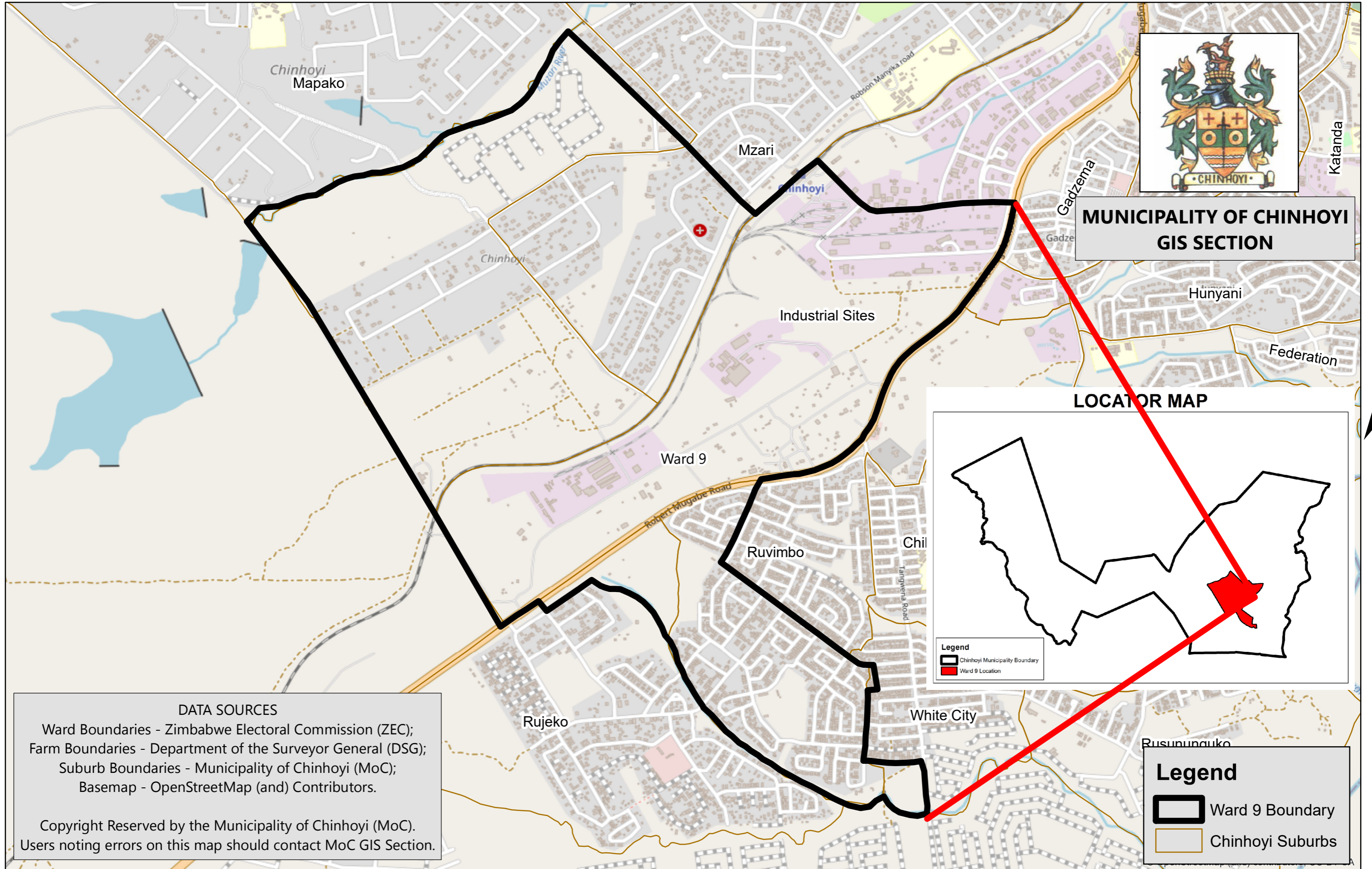
Legend
Ward 8 Boundary
Chinhoyi Suburbs



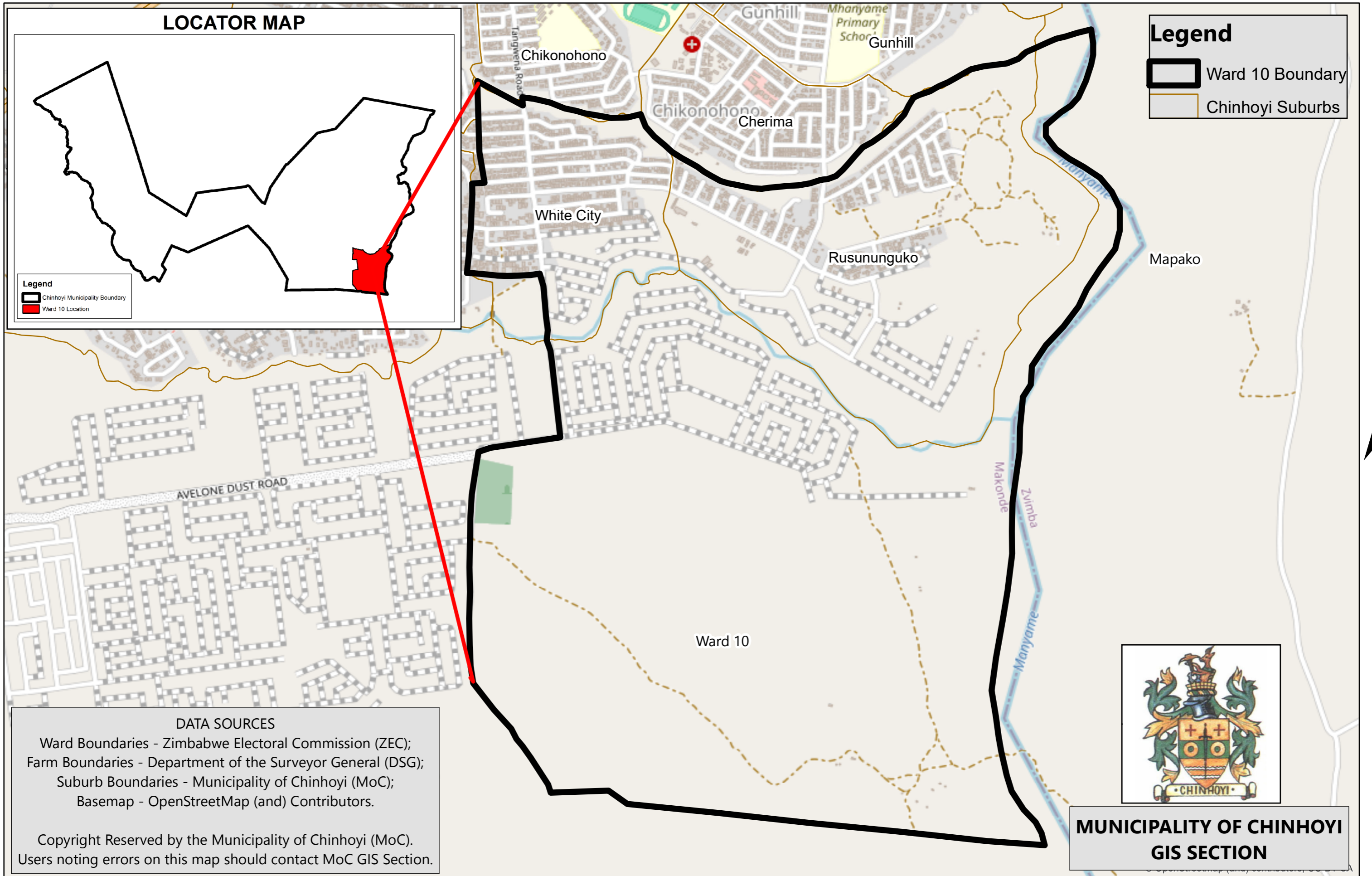
**MUNICIPALITY OF CHINHOYI
GIS SECTION**

0 1 2 km

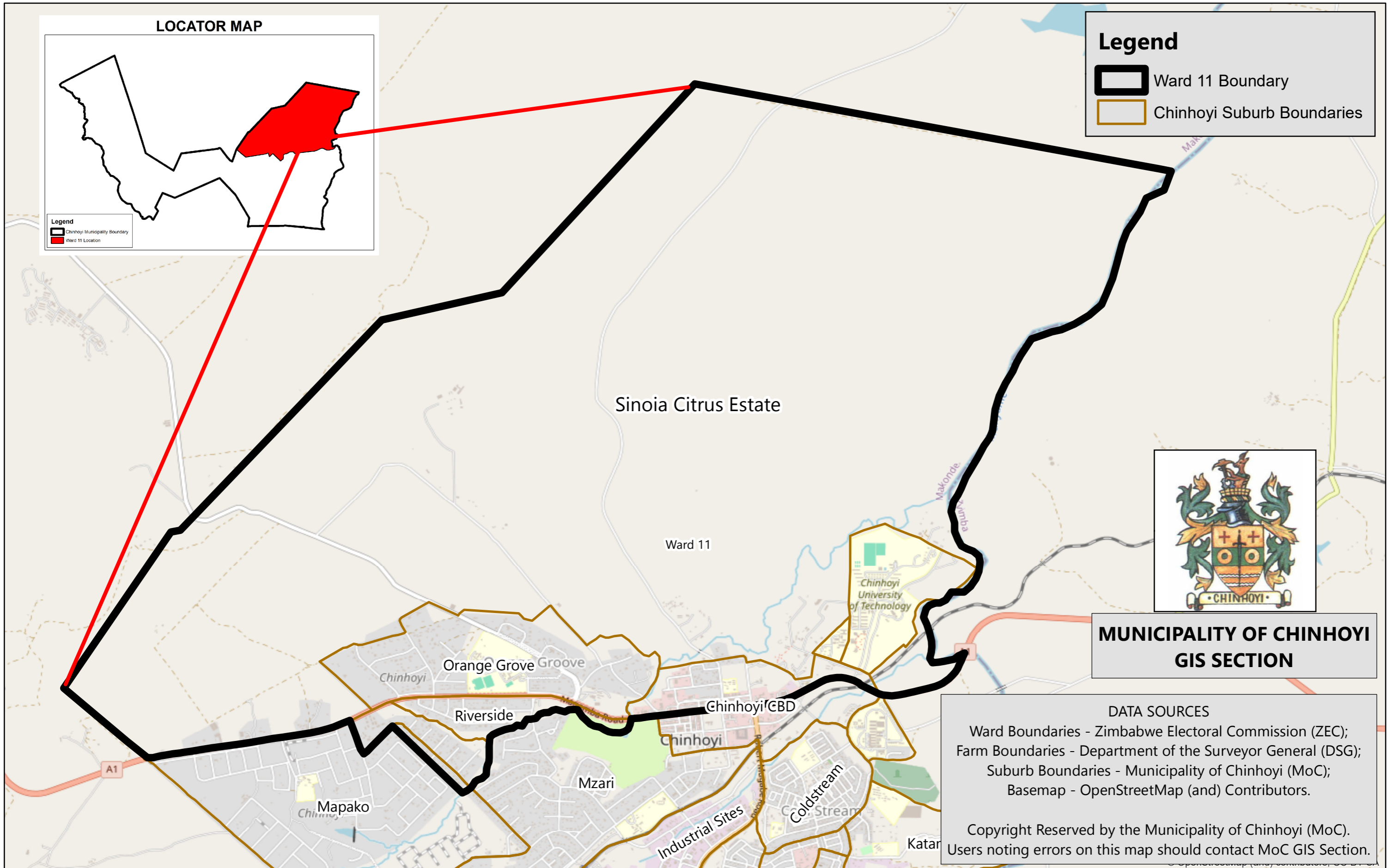
MUNICIPALITY OF CHINHOYI WARD 9



MUNICIPALITY OF CHINHOYI WARD 10



MUNICIPALITY OF CHINHOYI WARD 11



LOCATOR MAP

Legend

- Ward 11 Boundary
- Chinhoyi Suburb Boundaries

Legend

- Chinhoyi Municipality Boundary
- Ward 11 Location



**MUNICIPALITY OF CHINHOYI
GIS SECTION**

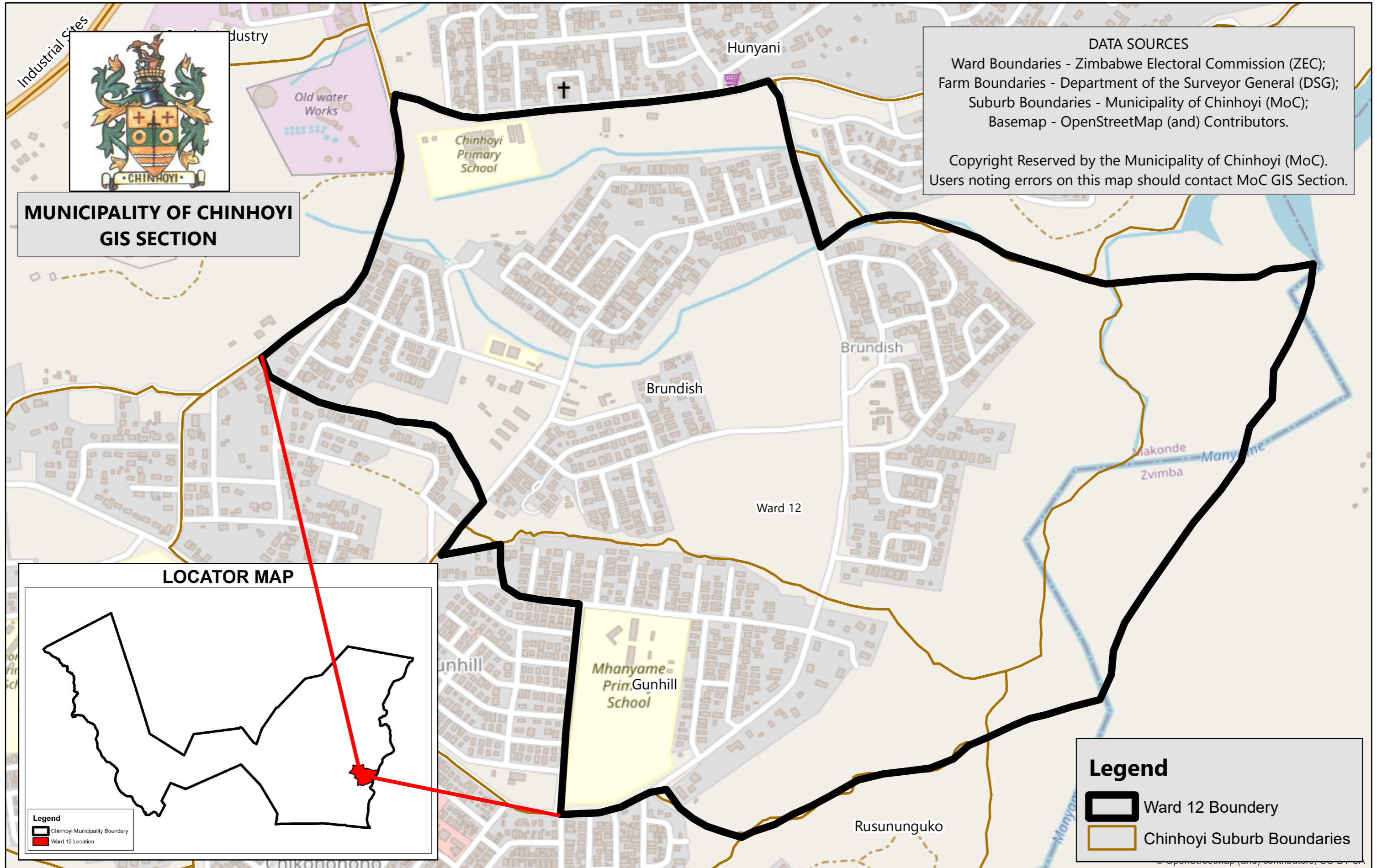
DATA SOURCES

Ward Boundaries - Zimbabwe Electoral Commission (ZEC);
Farm Boundaries - Department of the Surveyor General (DSG);
Suburb Boundaries - Municipality of Chinhoyi (MoC);
Basemap - OpenStreetMap (and) Contributors.

Copyright Reserved by the Municipality of Chinhoyi (MoC).
Users noting errors on this map should contact MoC GIS Section.

0 2 4 8 km

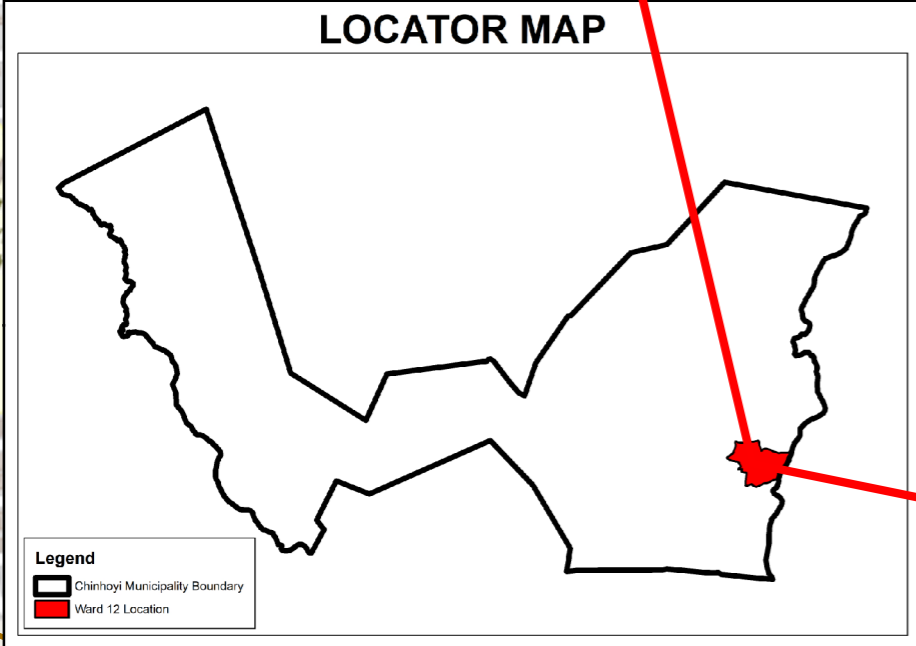
MUNICIPALITY OF CHINHOYI WARD 12



DATA SOURCES
Ward Boundaries - Zimbabwe Electoral Commission (ZEC);
Farm Boundaries - Department of the Surveyor General (DSG);
Suburb Boundaries - Municipality of Chinhoyi (MoC);
Basemap - OpenStreetMap (and) Contributors.

Copyright Reserved by the Municipality of Chinhoyi (MoC).
Users noting errors on this map should contact MoC GIS Section.

**MUNICIPALITY OF CHINHOYI
GIS SECTION**



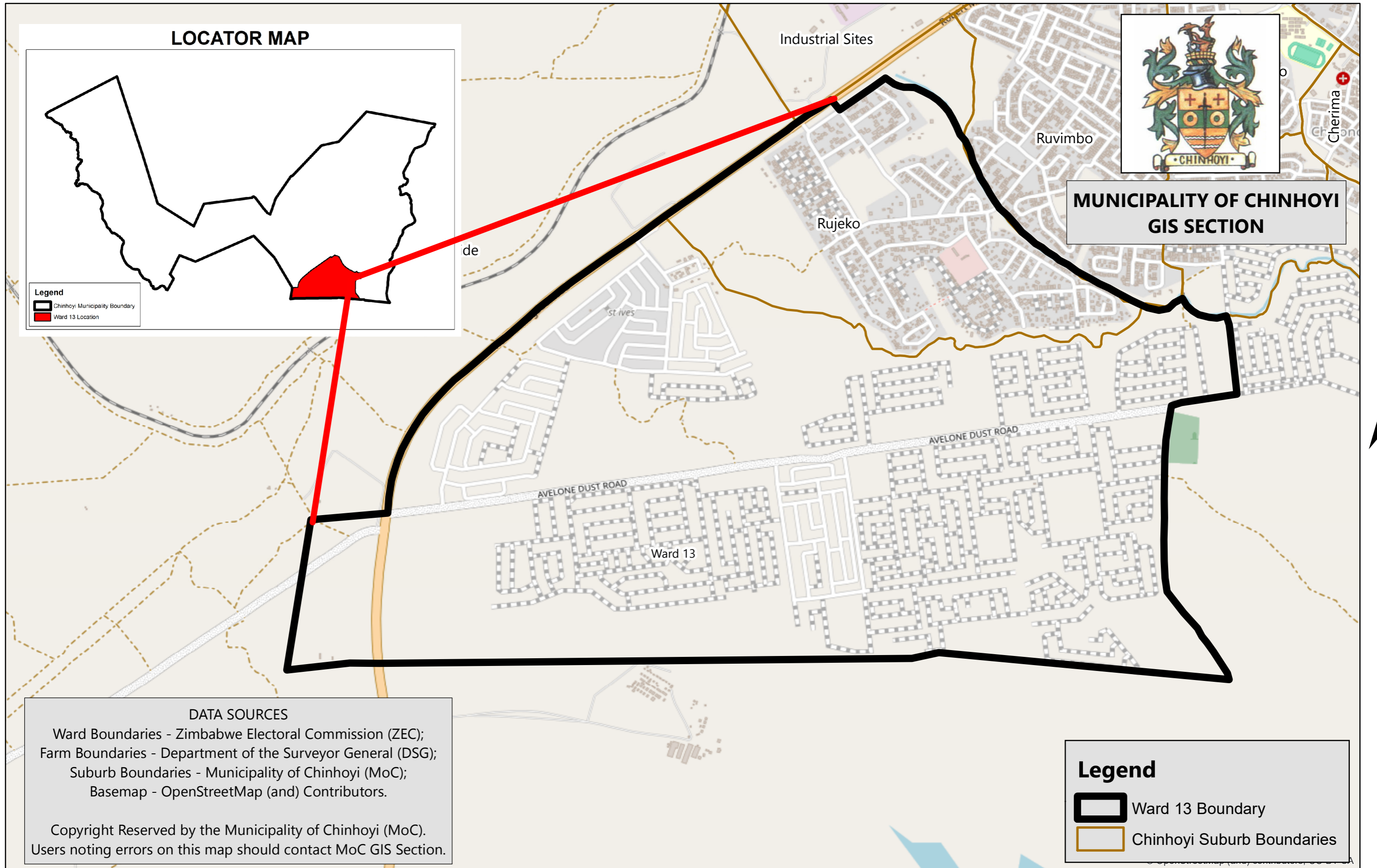
Legend

- Ward 12 Boundery
- Chinhoyi Suburb Boundaries

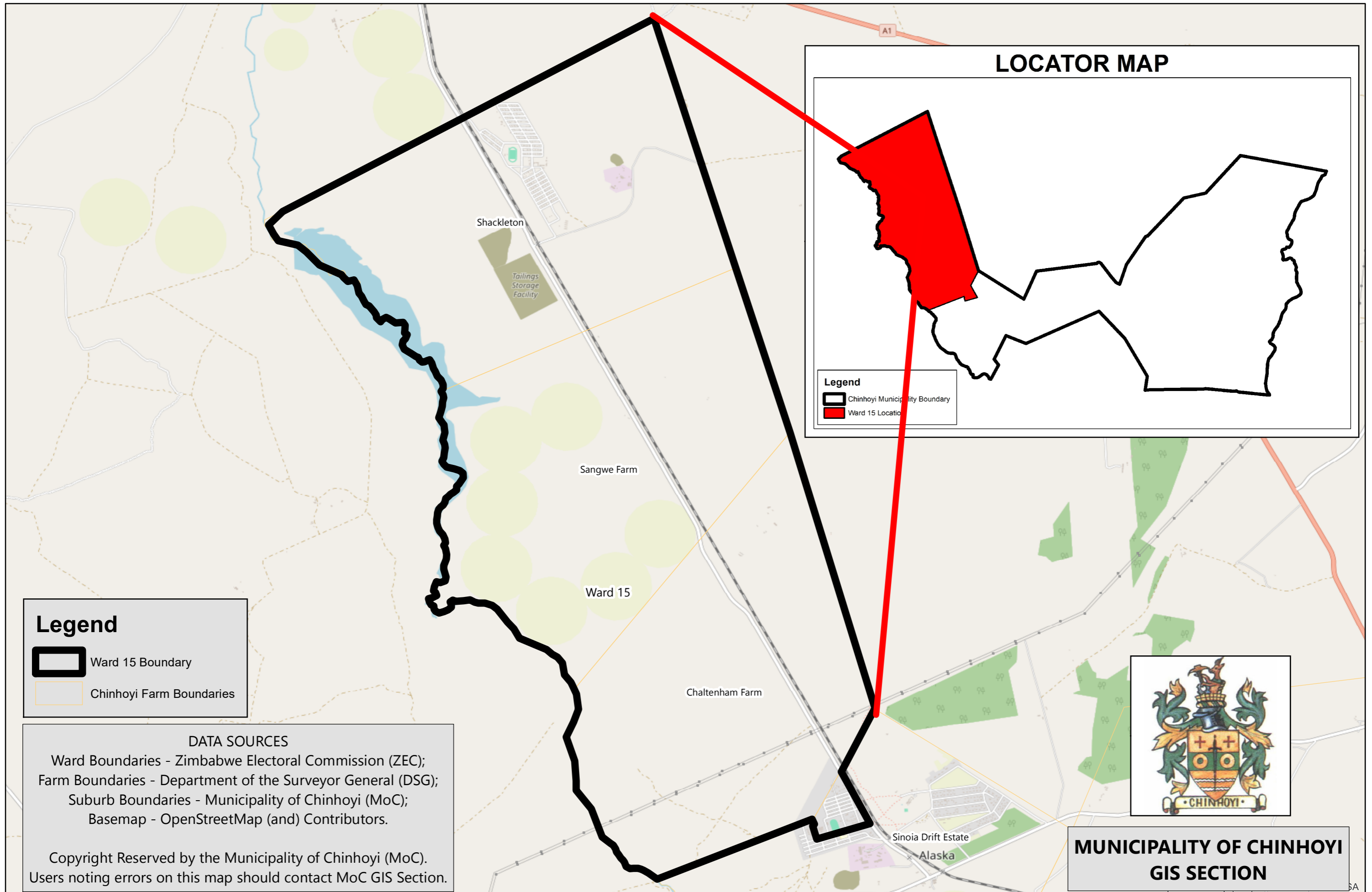
0 1 2 km



MUNICIPALITY OF CHINHOYI WARD 13



MUNICIPALITY OF CHINHOYI WARD 15



Legend

- Ward 15 Boundary
- Chinhoyi Farm Boundaries

DATA SOURCES
Ward Boundaries - Zimbabwe Electoral Commission (ZEC);
Farm Boundaries - Department of the Surveyor General (DSG);
Suburb Boundaries - Municipality of Chinhoyi (MoC);
Basemap - OpenStreetMap (and) Contributors.

Copyright Reserved by the Municipality of Chinhoyi (MoC).
Users noting errors on this map should contact MoC GIS Section.

LOCATOR MAP

Legend

- Chinhoyi Municipality Boundary
- Ward 15 Location



**MUNICIPALITY OF CHINHOYI
GIS SECTION**

